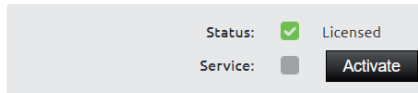


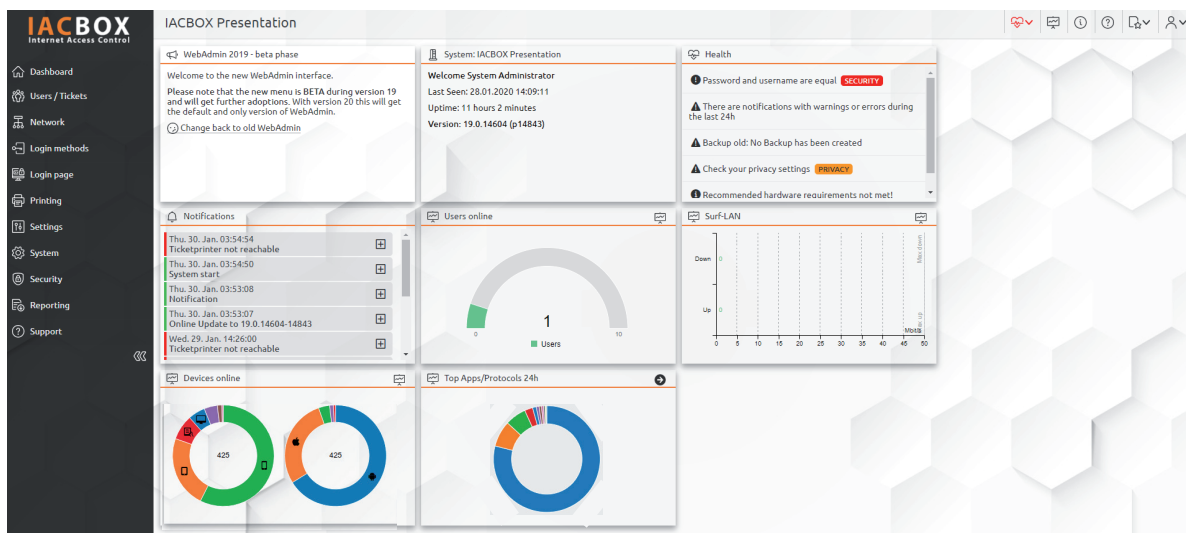
## Step-by-step

Log in to the *WebAdmin* of your IACBOX. Via **Network > Application Control** you get directly into the menu. To start data evaluation, you have to enable the module by clicking on the **Activate** button.

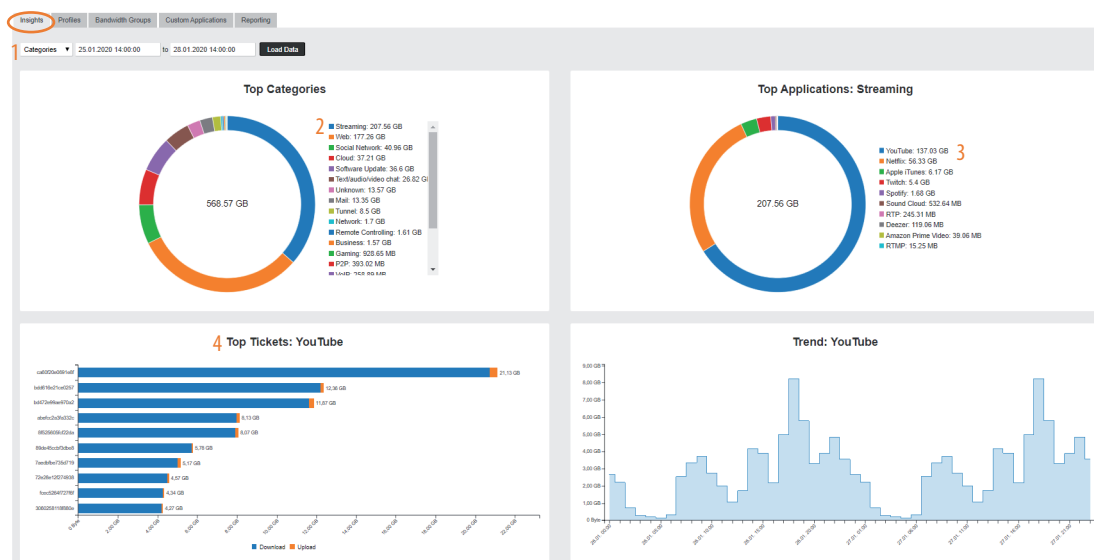
### Application Control



As soon as the module is licensed, the *Dashboard* of your *WebAdmin* interface will display an evaluation of the applications generating most traffic over the last 24 hours.



The arrow symbol takes you directly to the **Application Control** menu. After an hour, a diagram will appear. The relevance of the information displayed will increase after an appropriate period of time depending on the level of traffic on your IACBOX.



You will find detailed evaluations of the data recorded via your IACBOX over the last 14 days in the **Insights** menu. You can adjust this period as required in terms of days and even hours. Open the **Dropdown field**<sup>1</sup>, then select a category and the preferred length of the period. Now you will be able to see which services were used most frequently and how much traffic they generated. If you click on one of these applications, e.g. **Streaming**<sup>2</sup>, another diagram opens and you can view the applications in detail. In our example, **Youtube**<sup>3</sup> is the most popular application. Go one step further and click on one of the streaming services to display **Top Tickets**<sup>4</sup> including usage.

Once you have identified the main generators of traffic, you can adjust the settings precisely to your needs. The **PRO version** allows you to create profiles with up to 1,000 bandwidth groups and so treat user groups differently. Want to issue **free standard tickets**, but only for regular web surfing? Create a corresponding profile, block all or individual streaming services and assign this profile to the relevant ticket template. Want to make streaming possible, but not free for all guests? Create a **payment profile** for VIP guests to suit your precise requirements.

To do this, go to menu Profiles:

PROFILE NAME	USED BY	EDIT
Default Profile	TEMPLATES (13): Time Rate 5 hours, PMS: VIP Guest - Free Logon, User Agent Autologon, Seminar, SMS / Email Login, PMS VIP Gold Ticket AUTOLOGON DEVICES (2)	
Video Streaming	TEMPLATES (1): VIP Ticket	
Staff	TEMPLATES (1): Mitarbeiter / Staff	
Luxury Suites	TEMPLATES (1): VIP Platin Ticket	
Lobby / Bar	TEMPLATES (1): Social Login Facebook	

Existing profiles can be edited by clicking on the pencil icon, while new profiles can be created by clicking on the New Profile<sup>5</sup> button. The following window will be displayed.

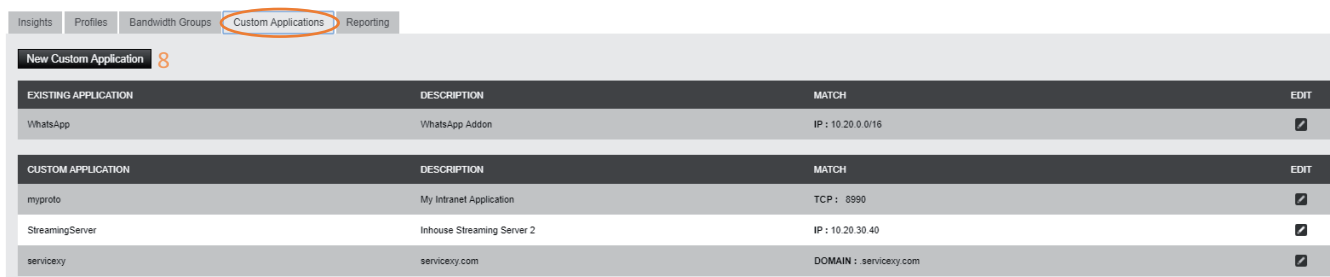
This list contains more than 200 applications that you can reject (it is advisable to use server response to block these as they are immediately recognisable at device level), drop (block without server response, timeout at device level, in special cases only), restrict bandwidth or merely log (i.e. they will only appear in the Insights menu). You can also assign the Bandwidth Groups<sup>6</sup> here.

These need to be first generated using the Bandwidth Groups menu:

BANDWIDTH GROUP	DOWNLOAD	UPLOAD	DELETE
Group 1	2 Mbit/s	2 Mbit/s	
Luxus-Suite	8 Mbit/s	8 Mbit/s	
Family Room 1	4 Mbit/s	2 Mbit/s	
Family Room 2	16 Mbit/s	8 Mbit/s	
Visitor Spa	2 Mbit/s	2 Mbit/s	
Visitor Restaurant	2 Mbit/s	2 Mbit/s	

Configure new bandwidth groups by clicking on New Bandwidth Group<sup>7</sup>. Choose a meaningful name and assign the **Down- und Upload Rate** (this can be changed at any time). So not forget to save!

If the options specified are not appropriate to your particular case, you can extend existing applications or define your own. To do this, go to Custom Applications menu:



EXISTING APPLICATION	DESCRIPTION	MATCH	EDIT
WhatsApp	WhatsApp Addon	IP : 10.20.0.0/16	
CUSTOM APPLICATION	DESCRIPTION	MATCH	EDIT
myproto	My Intranet Application	TCP : 8990	
StreamingServer	Inhouse Streaming Server 2	IP : 10.20.30.40	
servicery	servicery.com	DOMAIN : servicery.com	

Create a new rule by clicking on New Custom Application<sup>8</sup> – the following selection window will appear:



Custom Application

9 ☒ NEW CUSTOM APPLICATION

10 ☐ ADD TO EXISTING APPLICATION

Internal\_streamingserver\_1  
allowed characters A-Z, a-z, 0-9, -, \_

Business

Citrix

DESCRIPTION: Premium Streaming

TYPE: IP

IP: 1.2.3.4/4

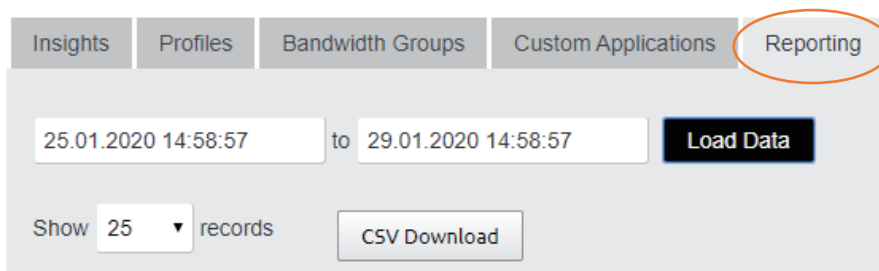
Save

Choose between New Custom Application<sup>9</sup> and Add To Existing Application<sup>10</sup>:

New Custom Application: You have an internal server on which videos are stored; you want this to be restricted only in terms of bandwidth. Assign a name, e.g. **internal\_streamingserver\_1**, then describe what it is about, e.g. **Premium video service** or **Training portal**, and for type select whether you want to specify domain, IP, TCP or UDP of the application and enter these in the lower field. The IP address of the server in our example has already been entered. After saving, these applications appear in Profiles menu.

Add To Existing Application: This gives you the option of adding an existing application to the list.

Would you like to save your evaluations for later? Switch to the Reporting menu, define the preferred period and download a **CSV file**.



Insights Profiles Bandwidth Groups Custom Applications Reporting

25.01.2020 14:58:57 to 29.01.2020 14:58:57 Load Data

Show 25 records CSV Download