
Internet for Guests

Rescue Mode

1.0.0

English

21.09.2011



Index

1. Introduction	3
2. Rescue Console	4
3. Rescue Menu.....	5
3.1 Automatic Network Configuration.....	5
3.2 Manual Network Configuration	11

1. Introduction

To enter the rescue mode, it must be booted from a bootable USB stick or from a bootable CD which contains the IAC-BOX software. Start with the standard installation until the following menu shows up.

```
Frozentux Installer 4.4.3862-ft                               Asteas Technologies GmbH & Co KG (c) 2011

Frozentux-CD-Installer - Mainmenu

Keyboard layout Step 1: choose your console keyboard layout
Partitioning    Step 2: prepare haddisks/partitions
Check          Step 3: checking partitioning settings
Installation    Step 4: start installation of IAC-Box

Hardware info   Save hardware info to USB Storage
Exit           Exit installer and reboot system

[Yes! Continue...] [Cancel]

Warning
Currently available partitions and haddisks will be
deleted/erased during installation!

Asteas Technologies GmbH & Co KG (c) 2011
```

2. Rescue Console

Once you are in this menu, you can press Alt + F2 to change to the console menu.

You can now execute various commands such as run a disk check or check other system components for errors.

```
#
# fdisk -l

Disk /dev/sda: 42.9 GB, 42949672960 bytes
255 heads, 63 sectors/track, 5221 cylinders
Units = cylinders of 16065 * 512 = 8225280 bytes
Disk identifier: 0xa0fa4b06

   Device Boot      Start         End      Blocks   Id  System
/dev/sda1            1           523     4200966   82  Linux swap / Solaris
/dev/sda2            *          524         3135     20980890   83  Linux
/dev/sda3            3136        5221     16755795   83  Linux
# last
root      ttyt1          172.17.0.100    Fri Sep  2 12:23 - 12:23 (0+00:00)
root      ttyt1          172.17.0.100    Fri Sep  2 12:23 - 12:23 (0+00:00)

wtmp begins Fri Sep  2 12:10:45 2011
# ifconfig
eth0      Link encap:Ethernet  HWaddr 00:0C:29:24:B8:5F
          inet addr:10.0.0.27  Bcast:10.0.0.255  Mask:255.255.0
          inet6 addr: fe80::20c:29ff:fe24:b85f/64  Scope:Link
          UP BROADCAST RUNNING MULTICAST  MTU:1500  Metric:1
          RX packets:431 errors:0 dropped:0 overruns:0 frame:0
          TX packets:187 errors:0 dropped:0 overruns:0 carrier:0
          collisions:0 txqueuelen:1000
          RX bytes:52953 (51.7 KiB)  TX bytes:21788 (21.2 KiB)

lo        Link encap:Local Loopback
          inet addr:127.0.0.1  Mask:255.0.0.0
          inet6 addr: ::1/128  Scope:Host
          UP LOOPBACK RUNNING  MTU:16436  Metric:1
          RX packets:0 errors:0 dropped:0 overruns:0 frame:0
          TX packets:0 errors:0 dropped:0 overruns:0 carrier:0
          collisions:0 txqueuelen:0
          RX bytes:0 (0.0 b)  TX bytes:0 (0.0 b)

#
```

By pressing Alt + F1 you get back into the setup menu of the installation process.

3. Rescue Menu

3.1 Automatic Network Configuration

As soon as you are in this installation menu, you can open the rescue menu by pressing F2.

```
Frozentux Installer 4.4.3862-ft                               Asteas Technologies GmbH & Co KG (c) 2011

Frozentux-CD-Installer - Mainmenu

Keyboard layout Step 1: choose your console keyboard layout
Partitioning    Step 2: prepare haddisks/partitions
Check           Step 3: checking partitioning settings
Installation    Step 4: start installation of IAC-Box

Hardware info   Save hardware info to USB Storage
Rescue Menu     Network install or network rescue

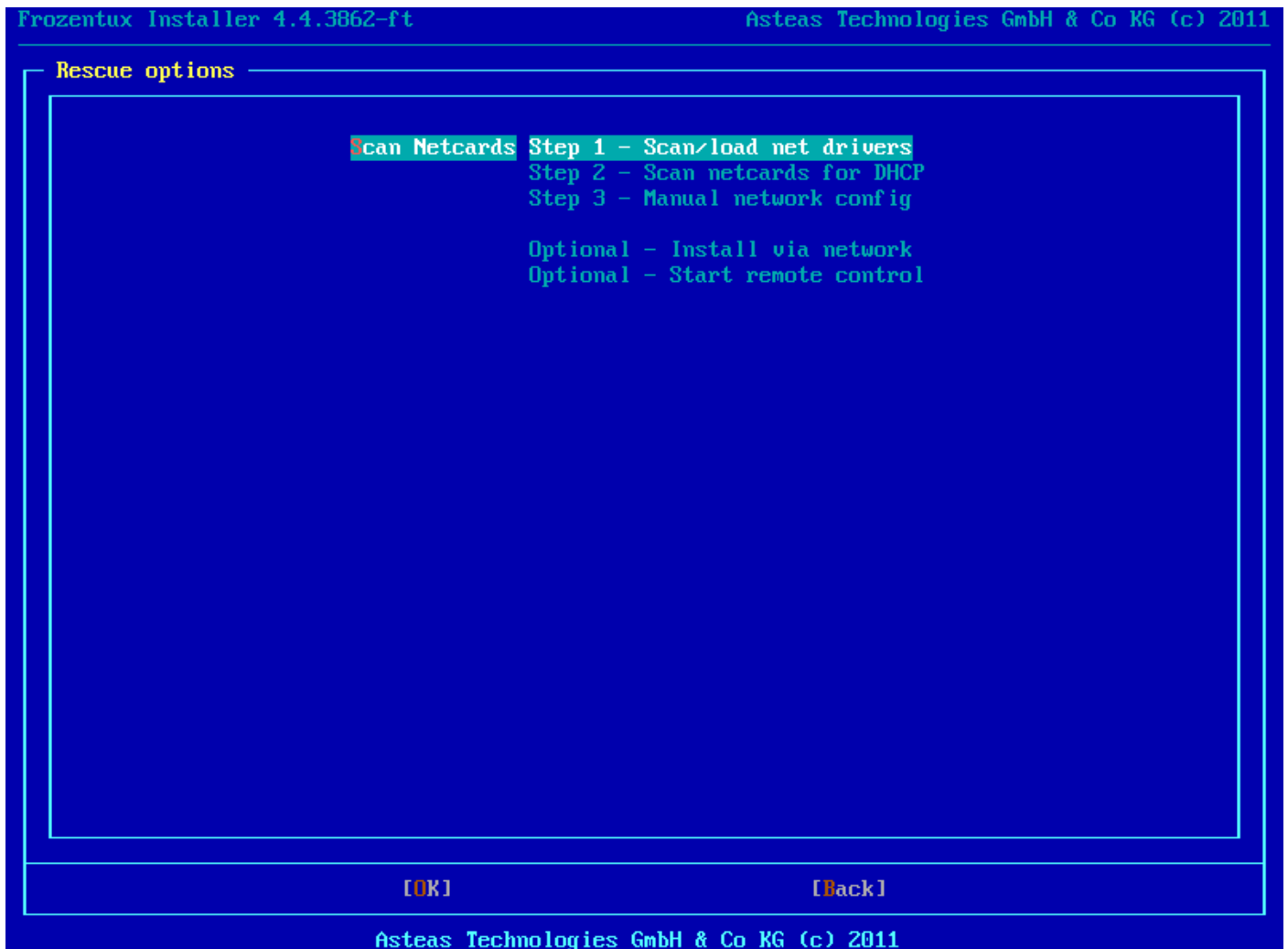
Exit           Exit installer and reboot system

[Yes! Continue...] [Cancel]

Warning
Currently available partitions and haddisks will be
deleted/erased during installation!

Asteas Technologies GmbH & Co KG (c) 2011
```

Here you see the rescue menu. Perform "Step 1" and "Step 2" so that the IAC-BOX gets accessible by Remote Control in your network. Alternatively, the network accessibility can also be achieved manually by doing "Step 3" (described at "3.2 Manual Network Configuration").



If „Step 1“ and „Step 2“ has been done, a message shows up. Here you see that the interface eth0 has got an IP-Address via DHCP.

```
Frozentux Installer 4.4.3862-ft                                     Asteas Technologies GmbH & Co KG (c) 2011
-----
Rescue network

Got ip address by dhcp and started services:
eth0      Link encap:Ethernet  HWaddr 00:0C:29:24:B8:5F
          inet addr:10.0.0.27  Bcast:10.0.0.255  Mask:255.255.255.0
          UP BROADCAST RUNNING MULTICAST  MTU:1500  Metric:1
          RX packets:31 errors:0 dropped:0 overruns:0 frame:0
          TX packets:22 errors:0 dropped:0 overruns:0 carrier:0
          collisions:0 txqueuelen:1000
          RX bytes:6532 (6.3 KiB)  TX bytes:8776 (8.5 KiB)

10.0.0.0/24  src 10.0.0.27
127.0.0.0/8
default via 10.0.0.254
Starting SSH daemon
Fuse filesystem already available.
Fuse control filesystem already available.

[OK]

Asteas Technologies GmbH & Co KG (c) 2011
```

Now switch to the "Start Remote Control" menu.

```
Frozentux Installer 4.4.3862-ft                               Asteas Technologies GmbH & Co KG (c) 2011
-----
Rescue options
-----
DHCP Discover          Step 1 - Scan/load net drivers
Manual Netconfig      Step 2 - Scan netcards for DHCP
                       Step 3 - Manual network config
Network Install       Optional - Install via network
Start Remote Control  Optional - Start remote control

[OK]                  [Back]

Asteas Technologies GmbH & Co KG (c) 2011
```

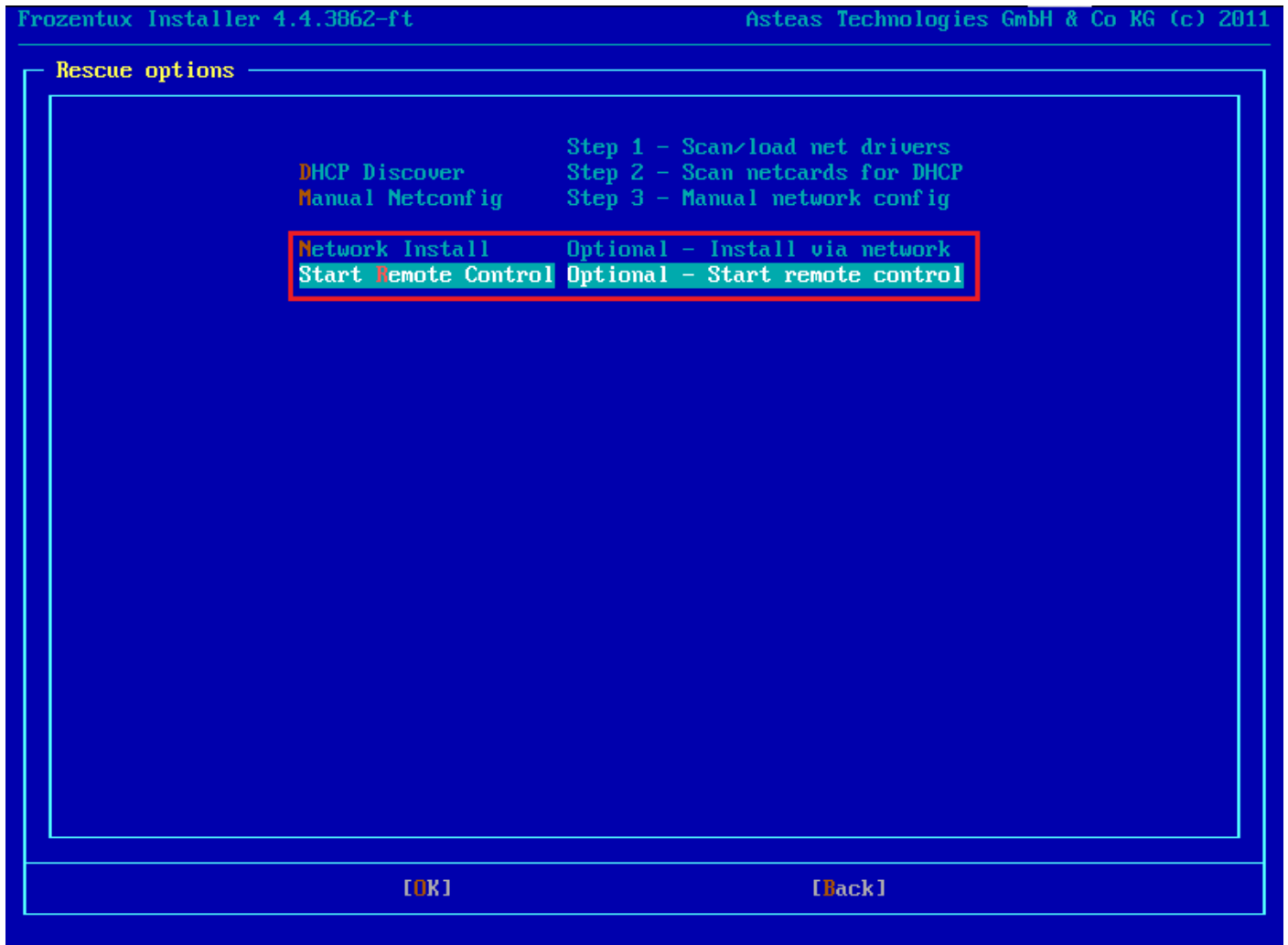
Here Username and Password must be entered for the remote control session. For Username and Password, contact the IAC-BOX support team. Then confirm your entries with „OK“.

```
Frozentux Installer 4.4.3862-ft                               Asteas Technologies GmbH & Co KG (c) 2011

Remote control -----
Remote control server remote-control.frozentux.
Username
Password

[OK]                               [Back]
```

If the configuration has been done correctly, remote control should be started now.



3.2 Manual Network Configuration

If there is no DHCP server available, the network settings can also be configured manually by doing “Step 3”.



Select a network interface, which should be configured for remote control. Enter IP-Address, Subnet mask, IP-Gateway and DNS Server according to your network environment. If there is no DNS Server available, you can also enter „Google Public DNS” (8.8.8.8).

```
Frozentux Installer 4.4.3862-ft                               Asteas Technologies GmbH & Co KG (c) 2011
Manual network configuration
-----
Manual network configuration
  [X] Interface OfficeLAN / 00:0c:29:24:b8:5f
  [ ] Interface SurfLAN / 00:0c:29:24:b8:69
* IP Address 192.168.192.168
* Subnet mask 255.255.255.0
* IP Gateway 192.168.192.254
* DNS Server 192.168.192.1

[OK]                               [Back]
```

By pressing „OK“, the following message shows up. Here you see the configured network interface eth0.

```
Frozentux Installer 4.4.3862-ft Asteas Technologies GmbH & Co KG (c) 2011

Rescue network

started services:
eth0  Link encap:Ethernet HWaddr 00:0C:29:24:B8:5F
      inet addr:192.168.192.168 Bcast:192.168.192.255 Mask:255.255.255.0
      UP BROADCAST RUNNING MULTICAST MTU:1500 Metric:1
      RX packets:37 errors:0 dropped:0 overruns:0 frame:0
      TX packets:23 errors:0 dropped:0 overruns:0 carrier:0
      collisions:0 txqueuelen:1000
      RX bytes:7267 (7.0 KiB) TX bytes:8818 (8.6 KiB)

192.168.192.0/24 src 192.168.192.168
127.0.0.0/8
default via 192.168.192.254
Starting SSH daemon
Fuse filesystem already available.
Fuse control filesystem already available.

OK

Asteas Technologies GmbH & Co KG (c) 2011
```

If the network configuration has been done correctly, the remote control session can be started now by entering Username and Password (as described at “3.1 Automatic Network Configuration”).

```
Frozentux Installer 4.4.3862-ft                               Asteas Technologies GmbH & Co KG (c) 2011
-----
Rescue options
-----
DHCP Discover          Step 1 - Scan/load net drivers
Manual Netconfig      Step 2 - Scan netcards for DHCP
                      Step 3 - Manual network config
Network Install       Optional - Install via network
Start Remote Control  Optional - Start remote control

[OK]                  [Back]

Asteas Technologies GmbH & Co KG (c) 2011
```