
Internet for Guests

VM Installation VMware Server

1.0.0

English

Software Version V 3.6.2736 or newer

21.07.2011



Index

1. Notes	3
2. Network Card configuration	4
3. Create Virtual Machine	5
3.1 Name and Location	6
3.2 Guest Operating System	6
3.3 Memory and processors.....	7
3.4 Hard Disk & Properties	7
3.5 Network Adapter & Properties	8
3.6 CD/DVD Drive	8
3.7 Floppy Drive.....	8
3.8 USB Controller	8
3.9 More Hardware	9
3.10 Ready to Complete.....	9
3.11 Starting the Installation.....	10

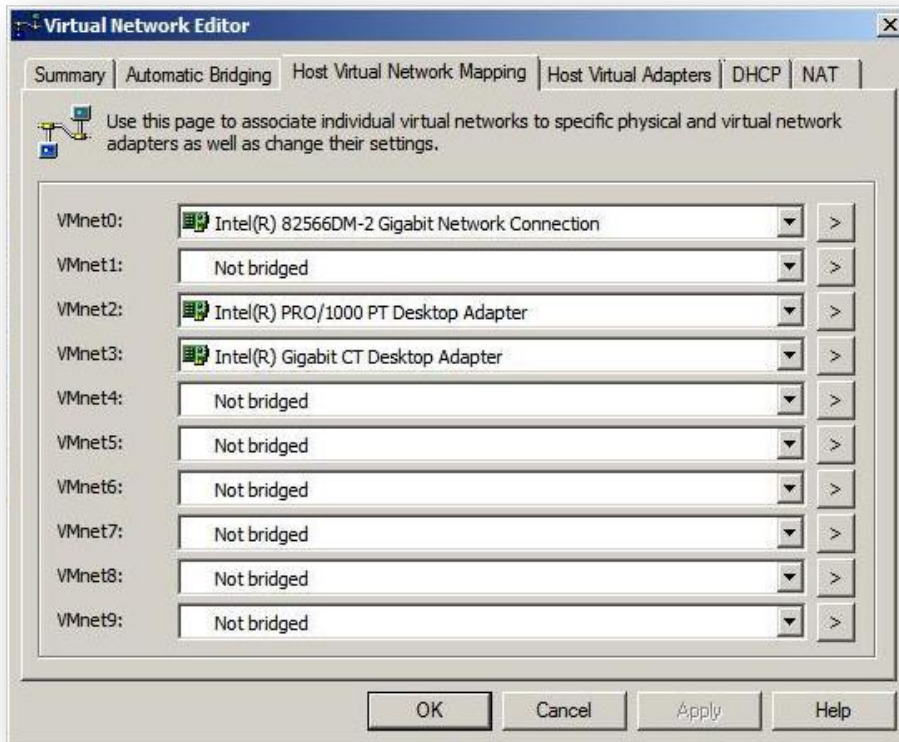
1. Notes



- A 64 bit host system is required!
- A dedicated network interface is required for the Surf-LAN.
- The system has to be permanently online because the license has to be synchronized periodically with the licensing server.
- Virtualization at locations with more than 50 concurrent users is not recommended!
- The Advanced Web Filter may cause negative side effects within the virtual machine and is therefore unsupported in virtual environments!

2. Network Card configuration

Before beginning the installation you have to prepare the network cards.



Start the application **Virtual Network Editor** using **Manage Virtual Networks** and switch to tab **Automatic Bridging**, where you have to uncheck the checkbox **Automatically choose an available network adapter to bridge to VMnet0**. Next switch to tab **Host Virtual Adapters**. Delete all adapters (select adapter and press **Remove** to delete).

Switch to tab **DHCP** and also delete all entries.

Switch to tab **NAT** and choose as VMnet-Host **disable** and confirm by pressing the **Apply** button.

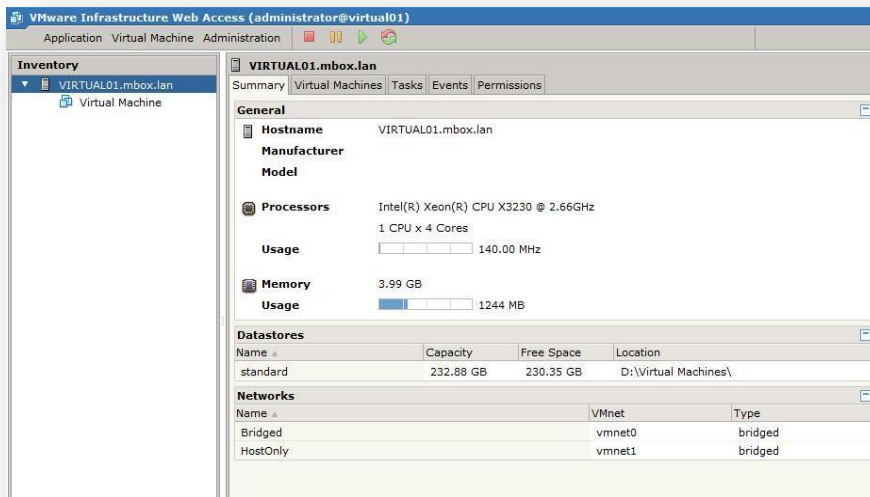
Next switch to tab **Host Virtual Network Mapping**.

Choose a free virtual adapter (VMnet) and assign it as Surf-LAN adapter using the drop-down menu (to the right).

Important: Restart the system for changes to take effect!

3. Create Virtual Machine

Launch the **VMware Server Home Page** and logon as Administrator.



On the left you can see your host system and probably already created VMs.

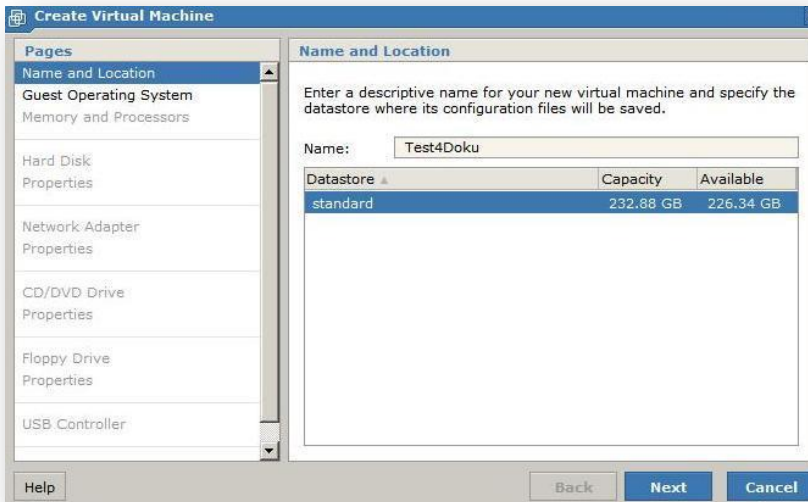
Click your host system and switch to tab **Summary** on the right. There you can find a sub category **Networks** where you can see the assignment of network adapters to network names (e.g. Bridged, HostOnly, NAT, etc.).

TIP: Note the name of the Surf-LAN interface.

The sub category **Datastores** shows you the path where the VM files are stored. Copy the Internet for Guests installation ISO image, which can be downloaded from our website, into this directory. If you want to install from CD you can skip this step.

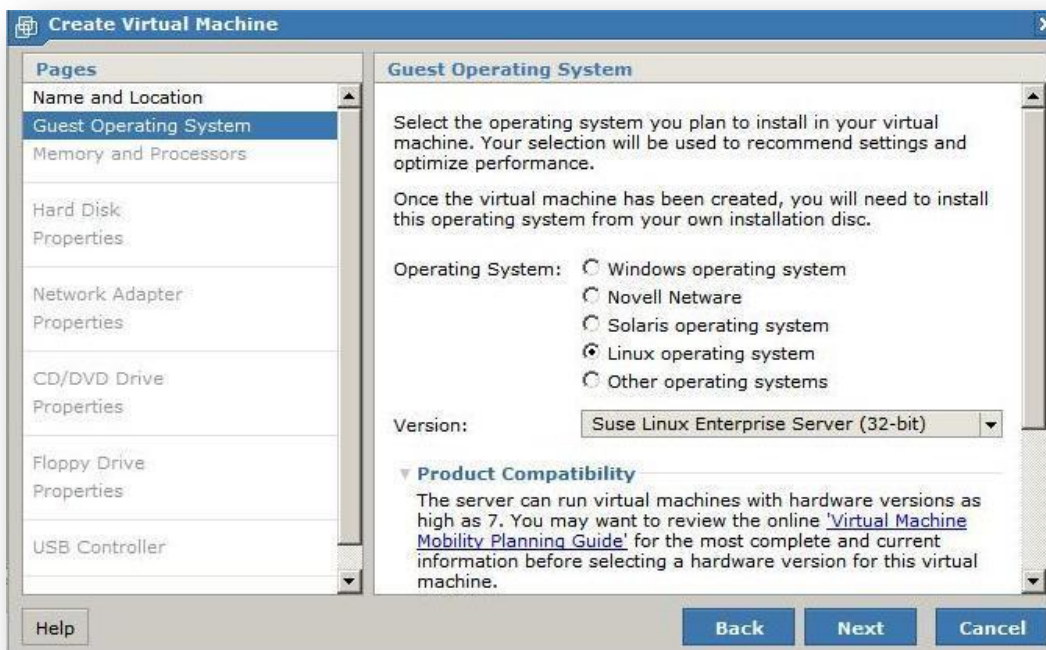
Afterwards click **Virtual Machine** in the top menu on the right and choose **Create Virtual Machine**. The assistant for creating VMs is displayed.

3.1 Name and Location



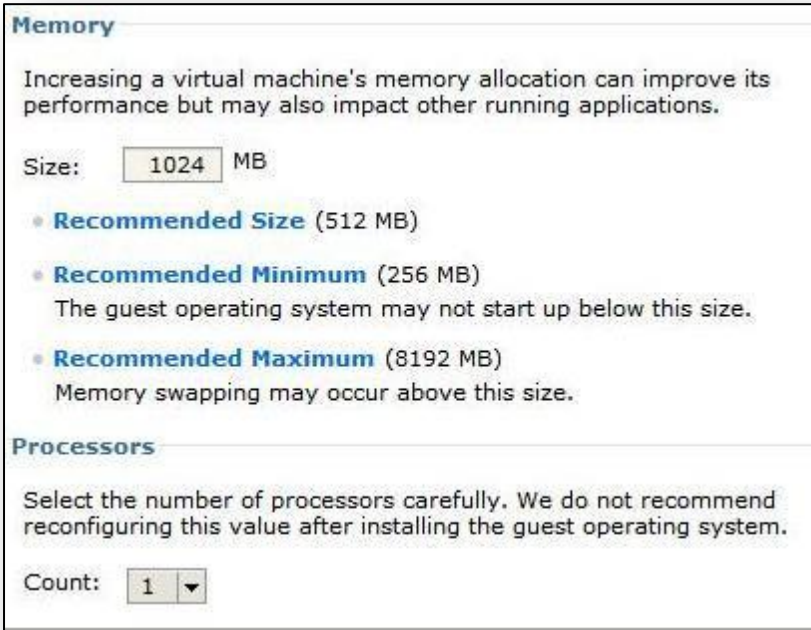
Choose a name for your Virtual Machine.

3.2 Guest Operating System



Configure the settings as described on the screenshot above.

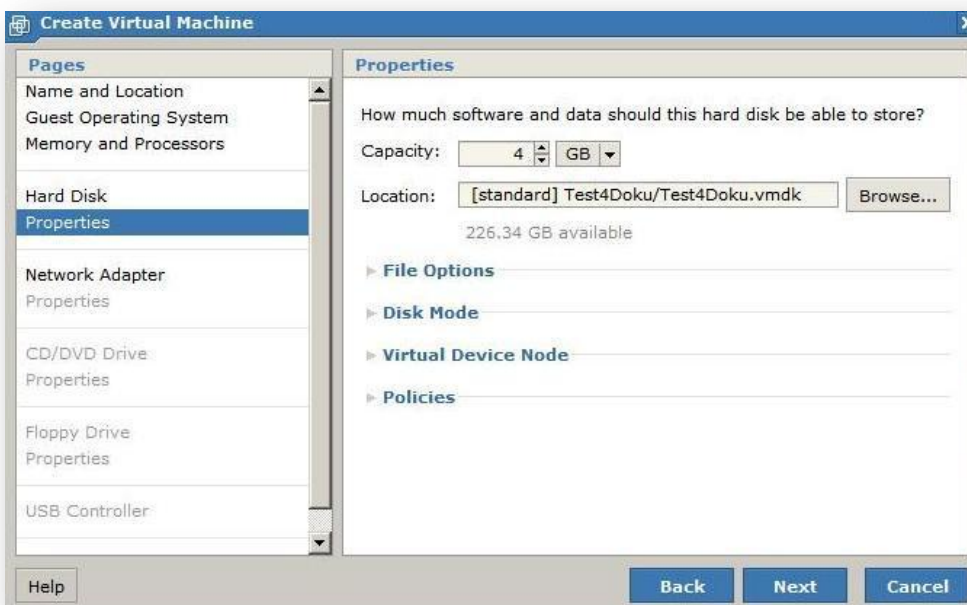
3.3 Memory and processors



You should assign your Virtual Machine at **least 1024 MB** Memory (the more memory the better).

3.4 Hard Disk & Properties

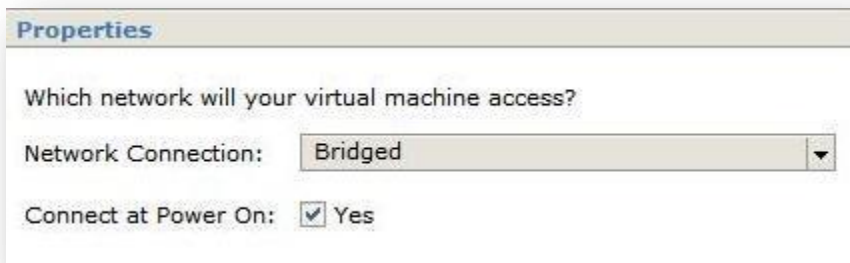
Click **Create a New Virtual Disk** to create a new hard disk.



You should assign a hard disk capacity of **at least 40 GB**.

3.5 Network Adapter & Properties

Click **Add a Network Adapter** to add a new network adapter to your VM.



The settings for the first respectively Office-LAN interface should look like on the screenshot on the left.

3.6 CD/DVD Drive

Choose **Use an ISO Image** and select **Browse** to select the earlier downloaded ISO installation image. Alternatively you can also insert a CD into your CD/DVD drive. Therefore select **Use a Physical Drive**.

3.7 Floppy Drive

Select **Don't Add a Floppy Drive**.

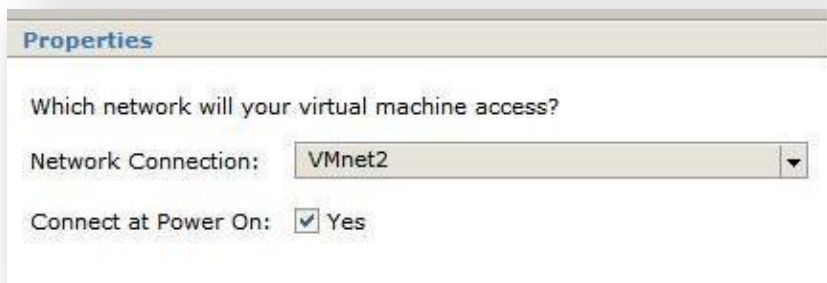
3.8 USB Controller

Select **Add a USB Controller**.

3.9 More Hardware



Select **More Hardware** and choose **Network Adapter**.



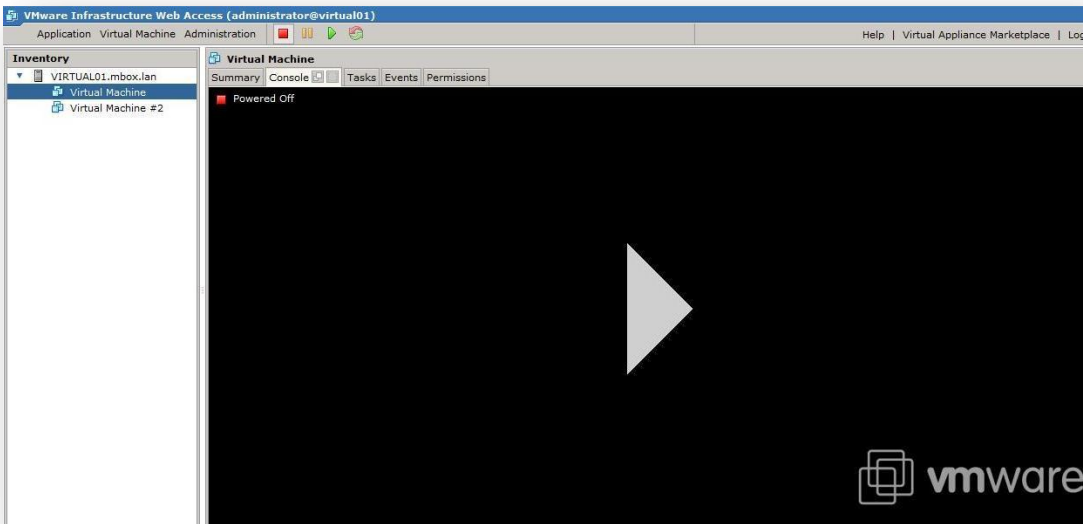
In the following dialog choose the before noted interface for the Surf LAN.

3.10 Ready to Complete

Select **Finish** to create your Virtual Machine.

3.11 Starting the Installation

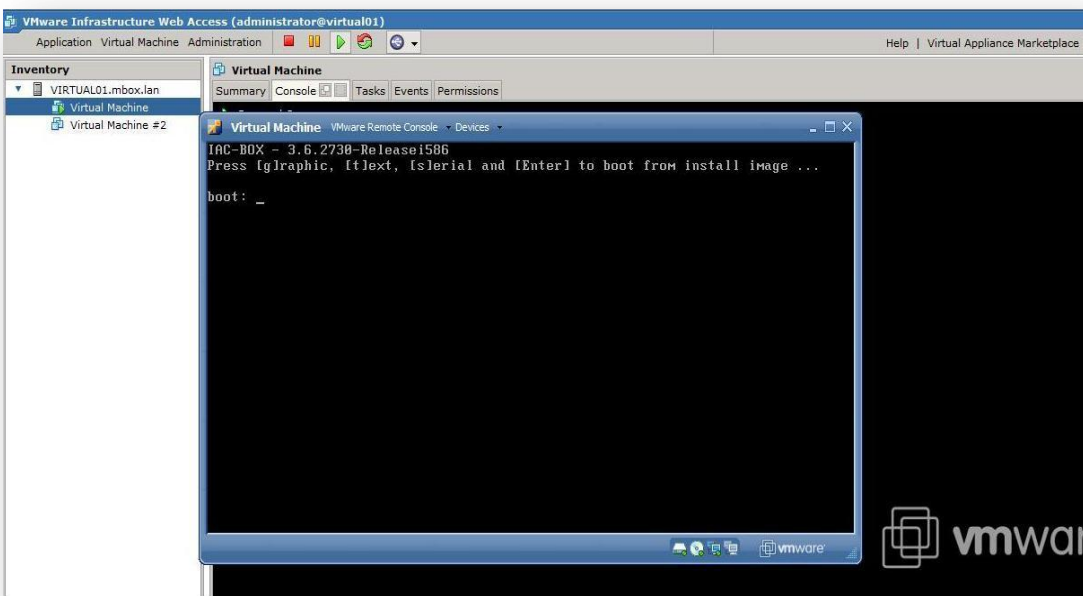
Back on the main screen you can see your right now created VM in the menu **Inventory** on the left.



Choose this VM, switch to tab **Console** and start your VM.

Note: If you get an error that the VMware Remote Console Plug-in is not installed select Install Plug-in to install it.

After a short time the boot screen appears. Enter '**g**' to start the graphic installation mode.



Follow the installation steps as described in the Technical Manual to complete the installation.