

---

# Internet for Guests

## VM Installation Hyper-V Server

1.0.0

English

Software version V 3.8.3078 or newer, Windows Server 2008 R2 Standard - Hyper-V

21.07.2011



## Index

---

1. Introduction .....	3
2. Create new virtual machine .....	4
3.1 Configure Virtual Networks.....	5
3.2 Create new virtual machine .....	7
3.2.1 Specify Name and Location.....	9
3.2.2 Assign Memory .....	10
3.2.3 Configure Networking.....	11
3.2.4 Connect Virtual Hard Disk.....	12
3.2.5 Installation Options.....	13
3.2.6 Complete Installation.....	14
3.3 Configure network devices.....	15
4. Start virtual machine.....	20

## 1. Introduction

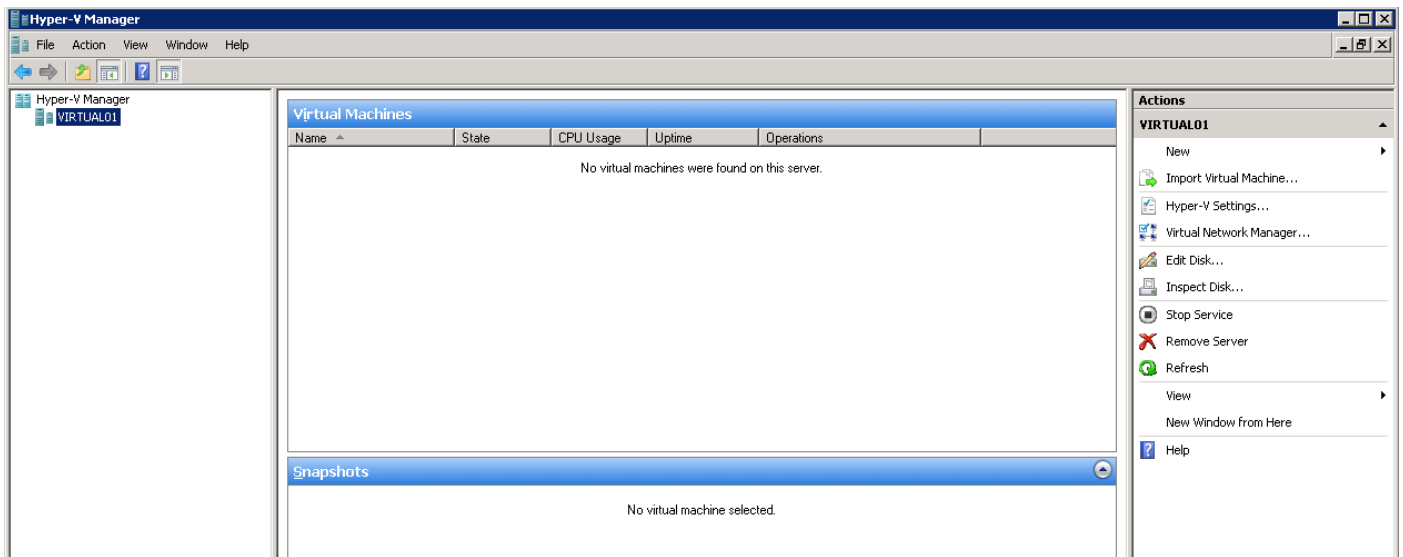
---



- A 64 bit host system is required!
- A dedicated network interface is required for the Surf-LAN.
- The system has to be permanently online because the license has to be synchronized periodically with the licensing server.
- Virtualization at locations with more than 50 concurrent users is not recommended!
- The Advanced Web Filter may cause negative side effects within the virtual machine and is therefore unsupported in virtual environments!

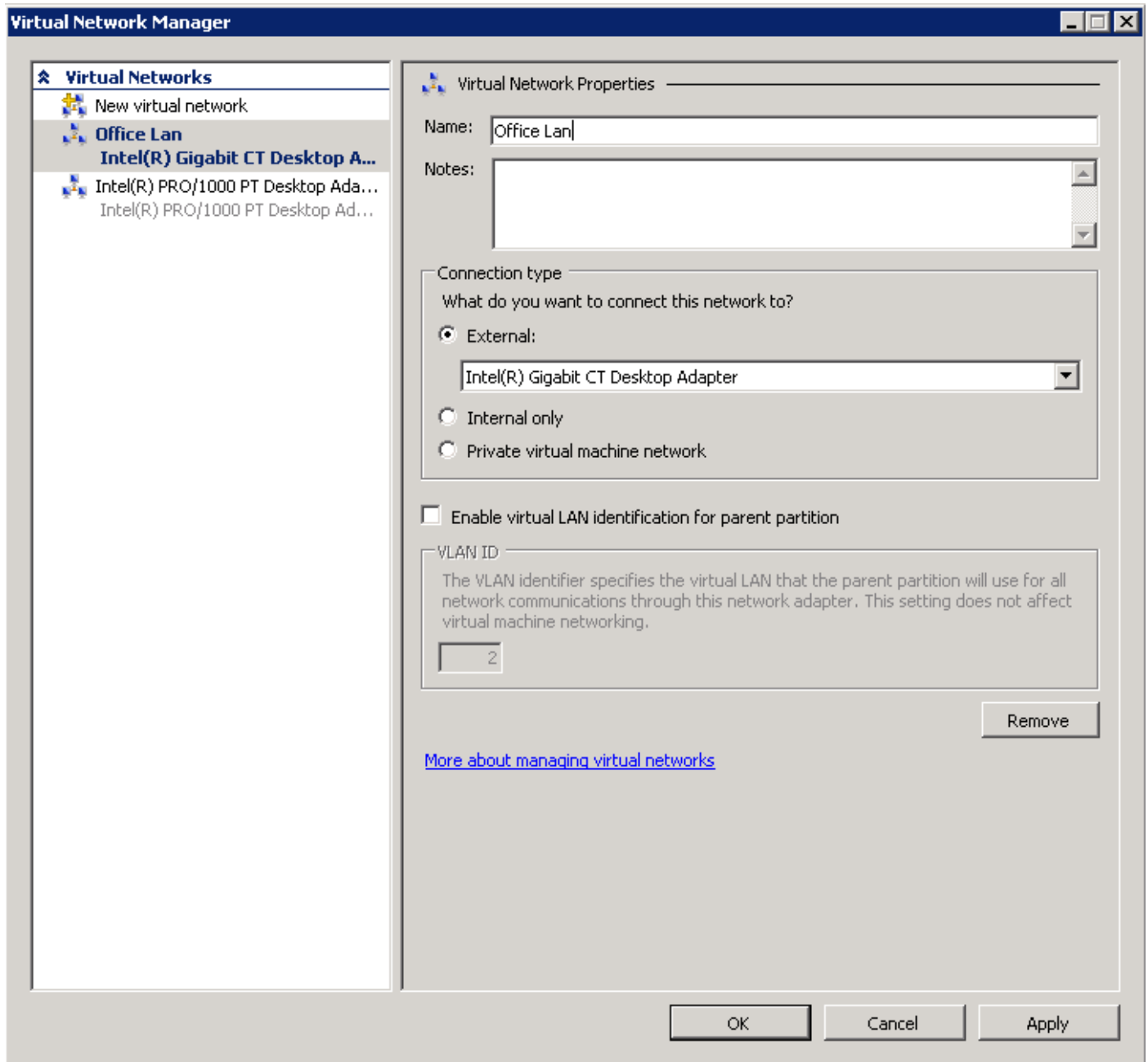
## 2. Create new virtual machine

---

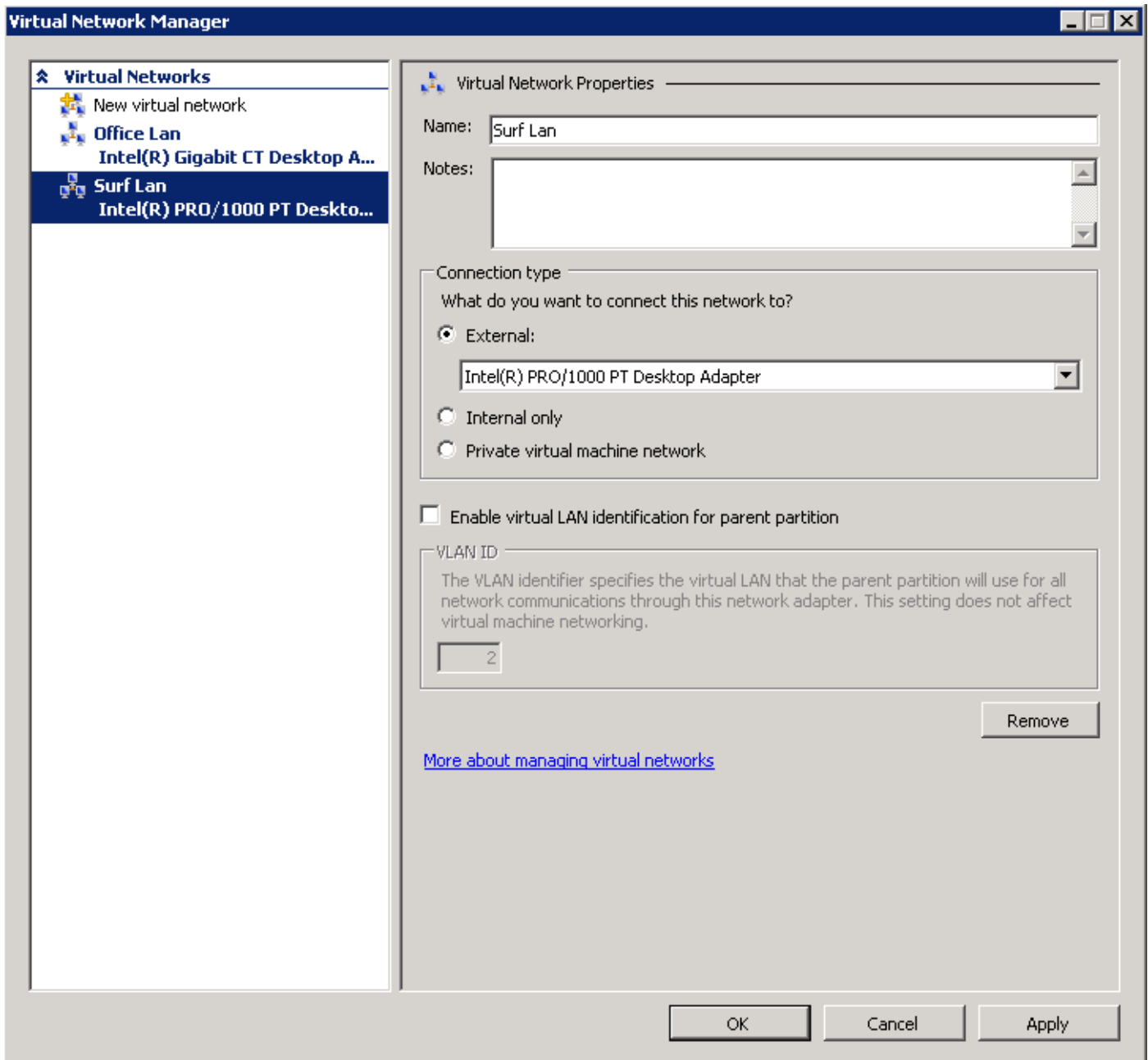


Click on your Hyper-V Server (here “VIRTUAL01”) at the left and then click on **“Virtual Network Manager...”** on the right. A new window opens.

### 3.1 Configure Virtual Networks



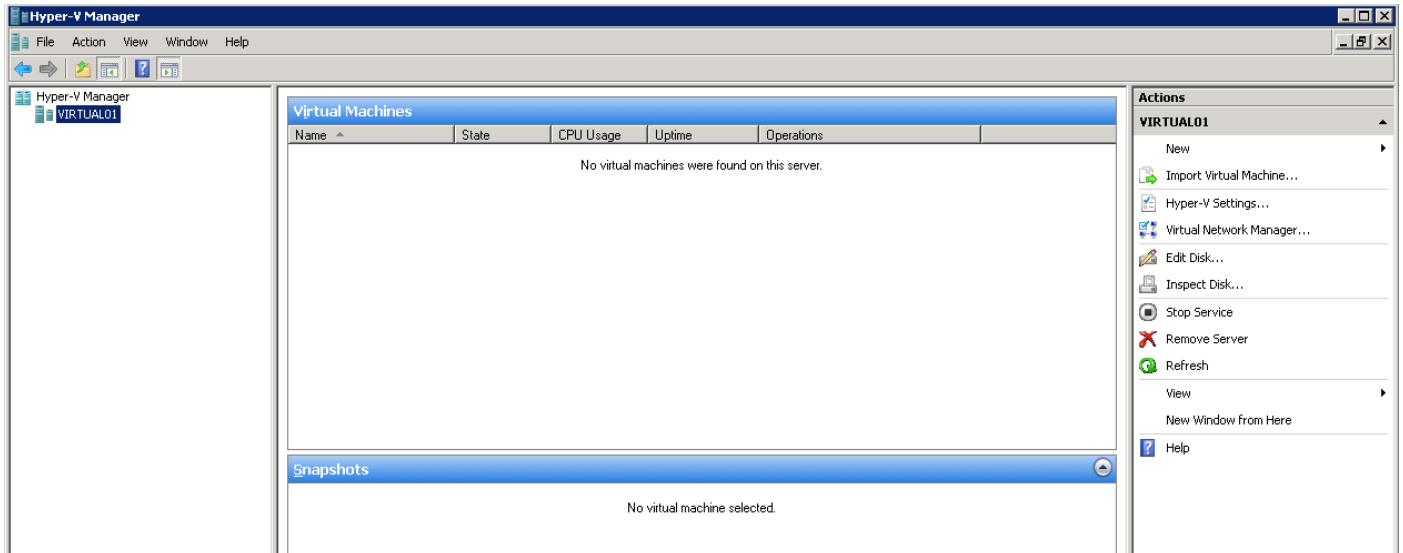
Click on the first virtual network on the left side. Then enter the name **“OfficeLan”** for this network and configure the settings as shown in the picture above. Then click on "Apply" to save the settings.



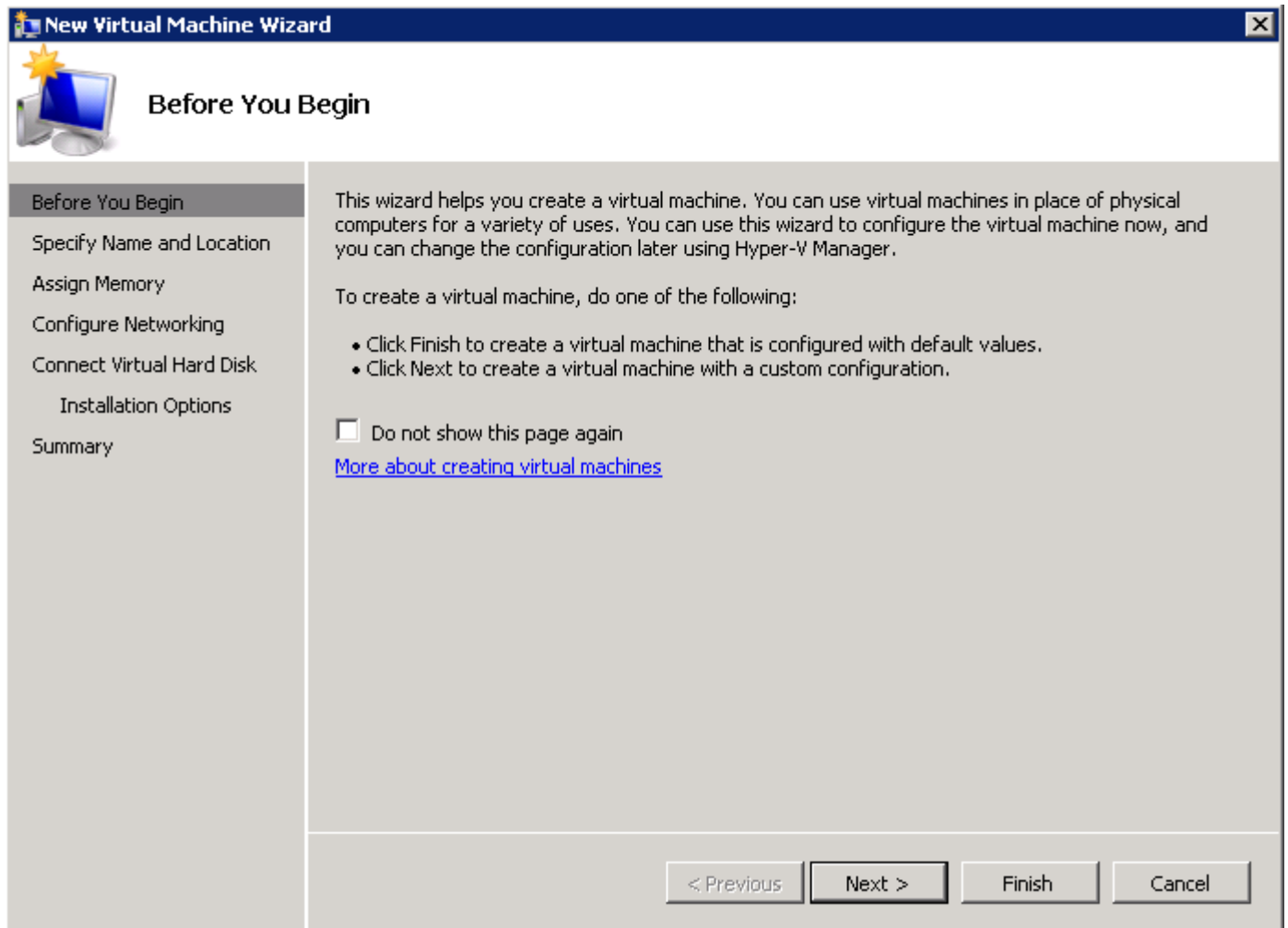
Now click on the second virtual network on the left side. For this, enter the name „**SurfLan**“ and configure the settings as shown in the picture above. Then click on „OK“ to save the settings.

## 3.2 Create new virtual machine

---

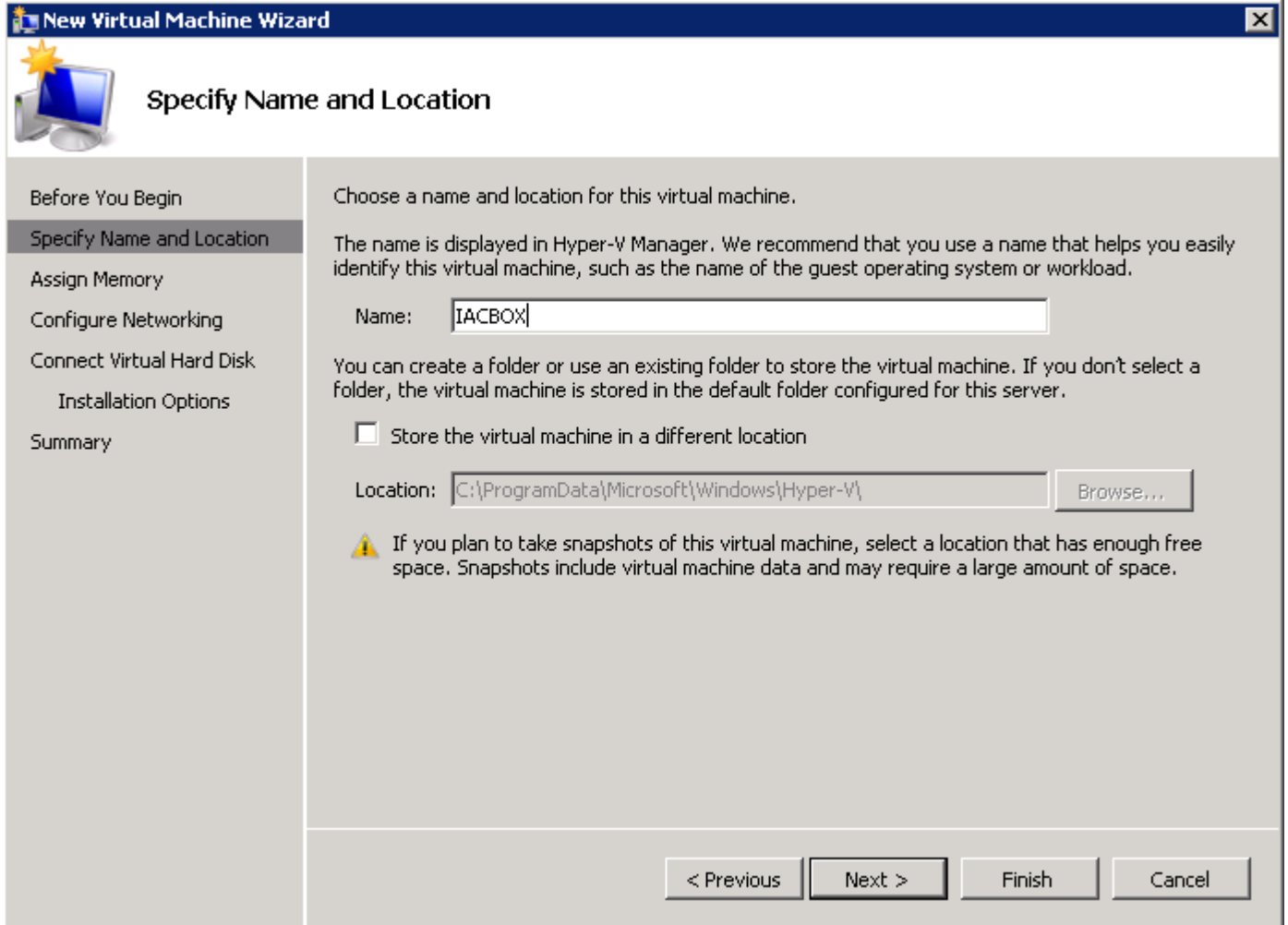


Click on „**New**“ on the right side to create a new virtual machine. A new window opens.



Confirm this dialoge by clicking on „Next“.

### 3.2.1 Specify Name and Location



The screenshot shows the 'New Virtual Machine Wizard' dialog box, specifically the 'Specify Name and Location' step. The window title is 'New Virtual Machine Wizard'. On the left, there is a navigation pane with the following steps: 'Before You Begin', 'Specify Name and Location' (which is highlighted), 'Assign Memory', 'Configure Networking', 'Connect Virtual Hard Disk', 'Installation Options', and 'Summary'. The main area of the dialog contains the following text and controls:

Choose a name and location for this virtual machine.


The name is displayed in Hyper-V Manager. We recommend that you use a name that helps you easily identify this virtual machine, such as the name of the guest operating system or workload.

Name:

You can create a folder or use an existing folder to store the virtual machine. If you don't select a folder, the virtual machine is stored in the default folder configured for this server.

Store the virtual machine in a different location

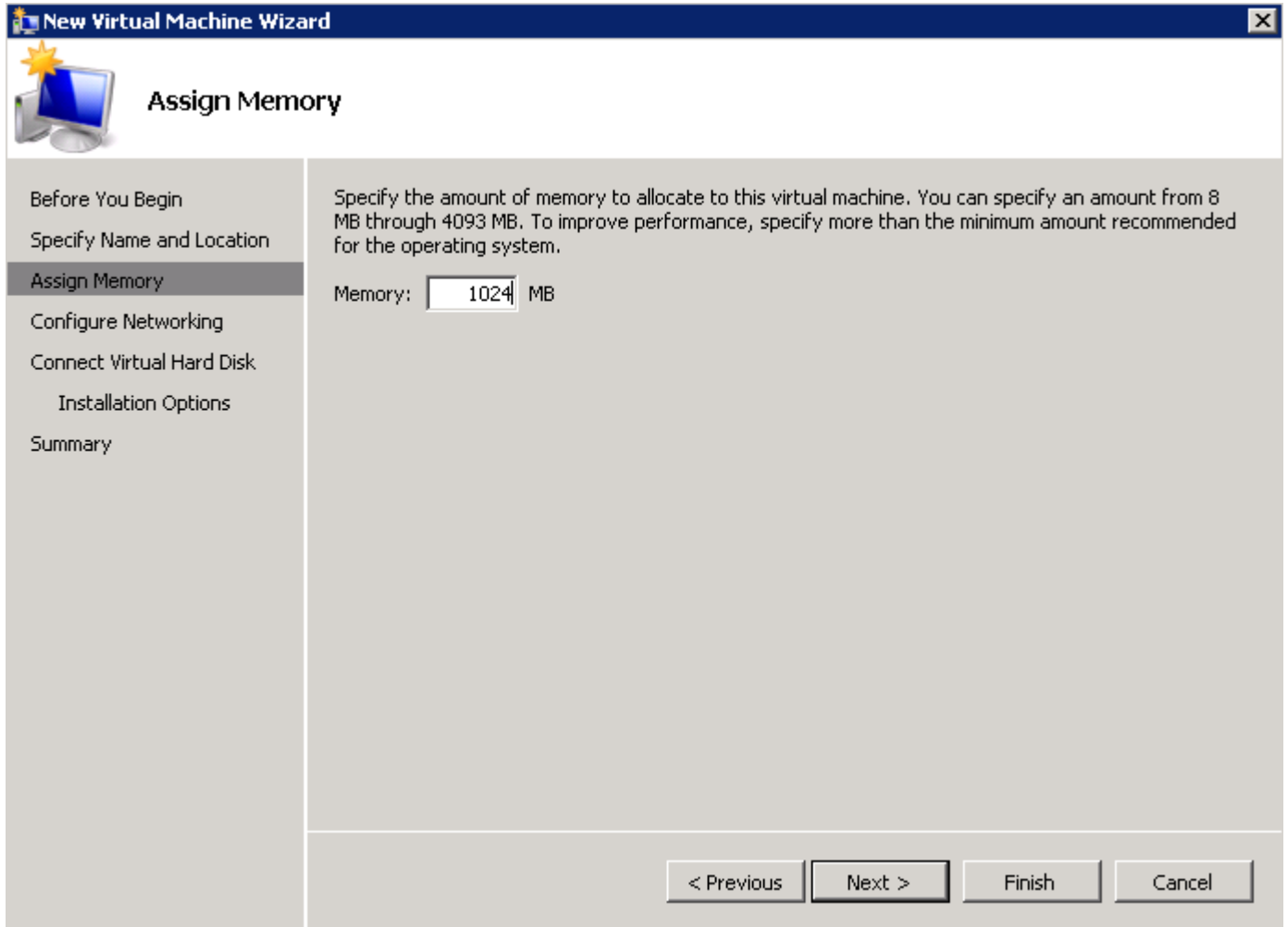
Location:

 If you plan to take snapshots of this virtual machine, select a location that has enough free space. Snapshots include virtual machine data and may require a large amount of space.

At the bottom of the dialog, there are four buttons: '< Previous', 'Next >', 'Finish', and 'Cancel'.

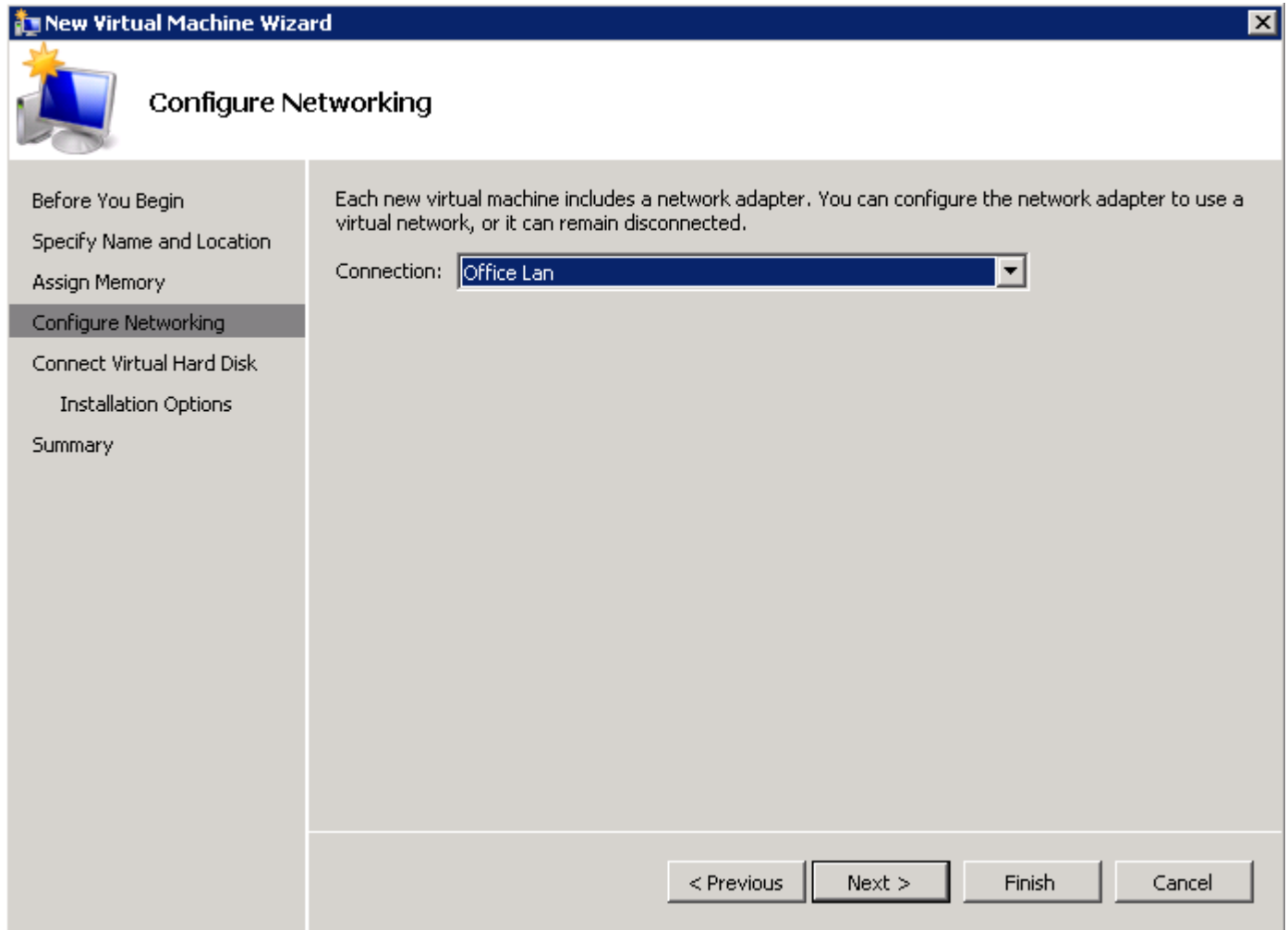
Enter a name for the virtual machine (in this example „IACBOX“) and click on „Next“ to continue.

### 3.2.2 Assign Memory



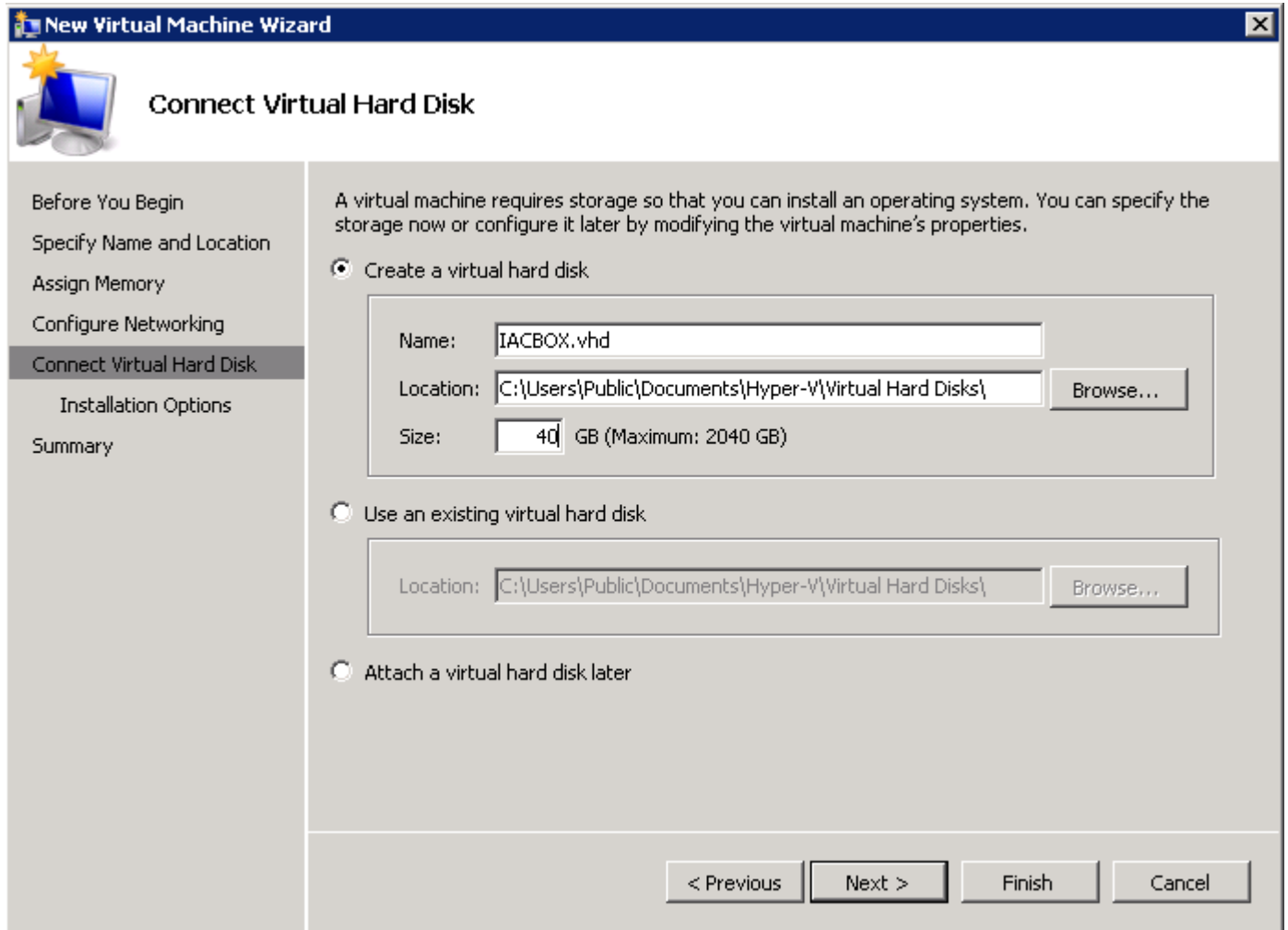
Select **at least 1024MB** Memory for the virtual machine. Then click on „Next“.

### 3.2.3 Configure Networking



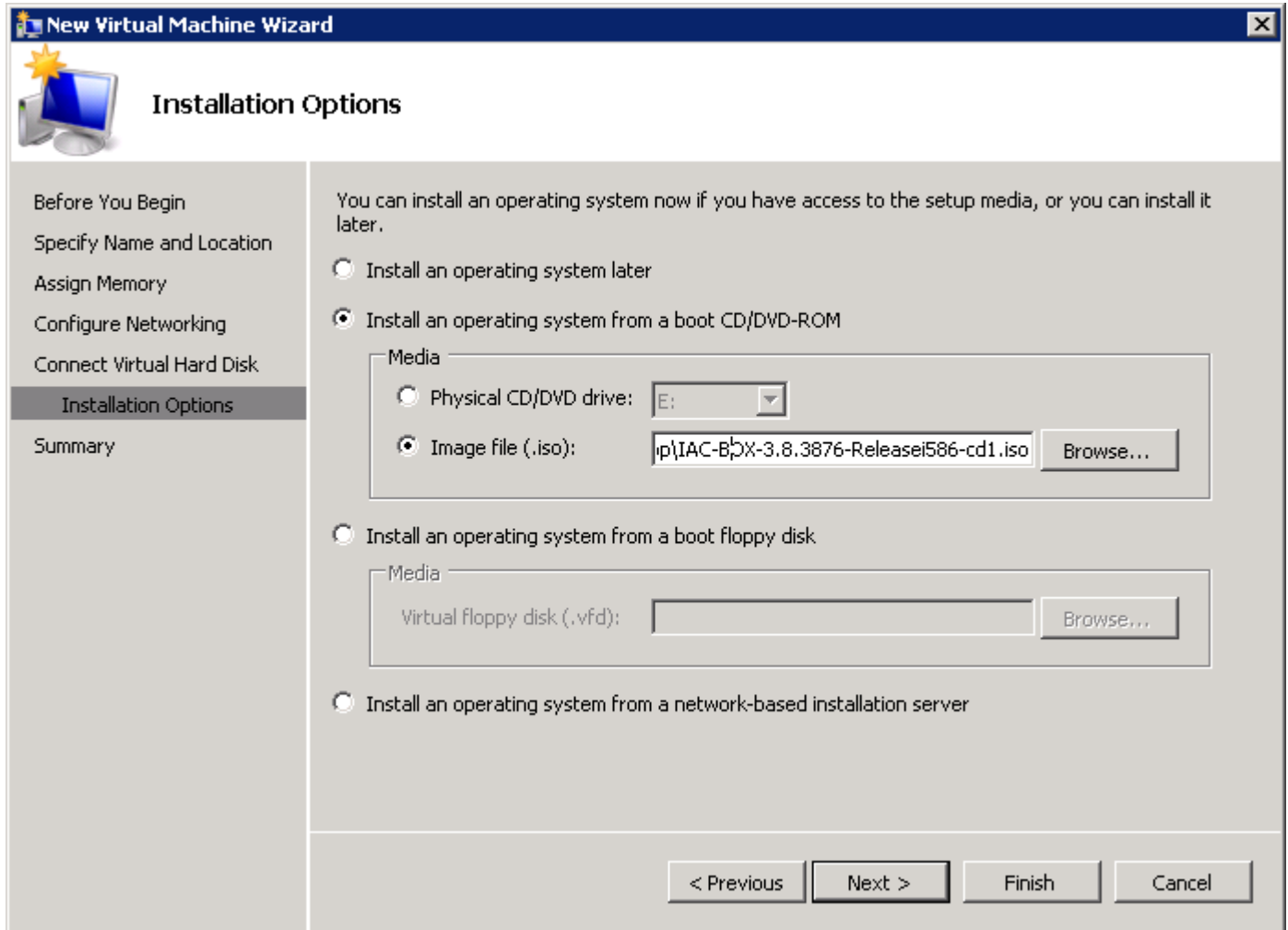
Select the „**Office Lan**“ connection and continue by clicking on „Next“.

### 3.2.4 Connect Virtual Hard Disk



Enter a name for the virtual hard disk and the location where it will be created. Then select **at least 40GB** for the virtual hard disk size. Click on “Next” to continue.

### 3.2.5 Installation Options



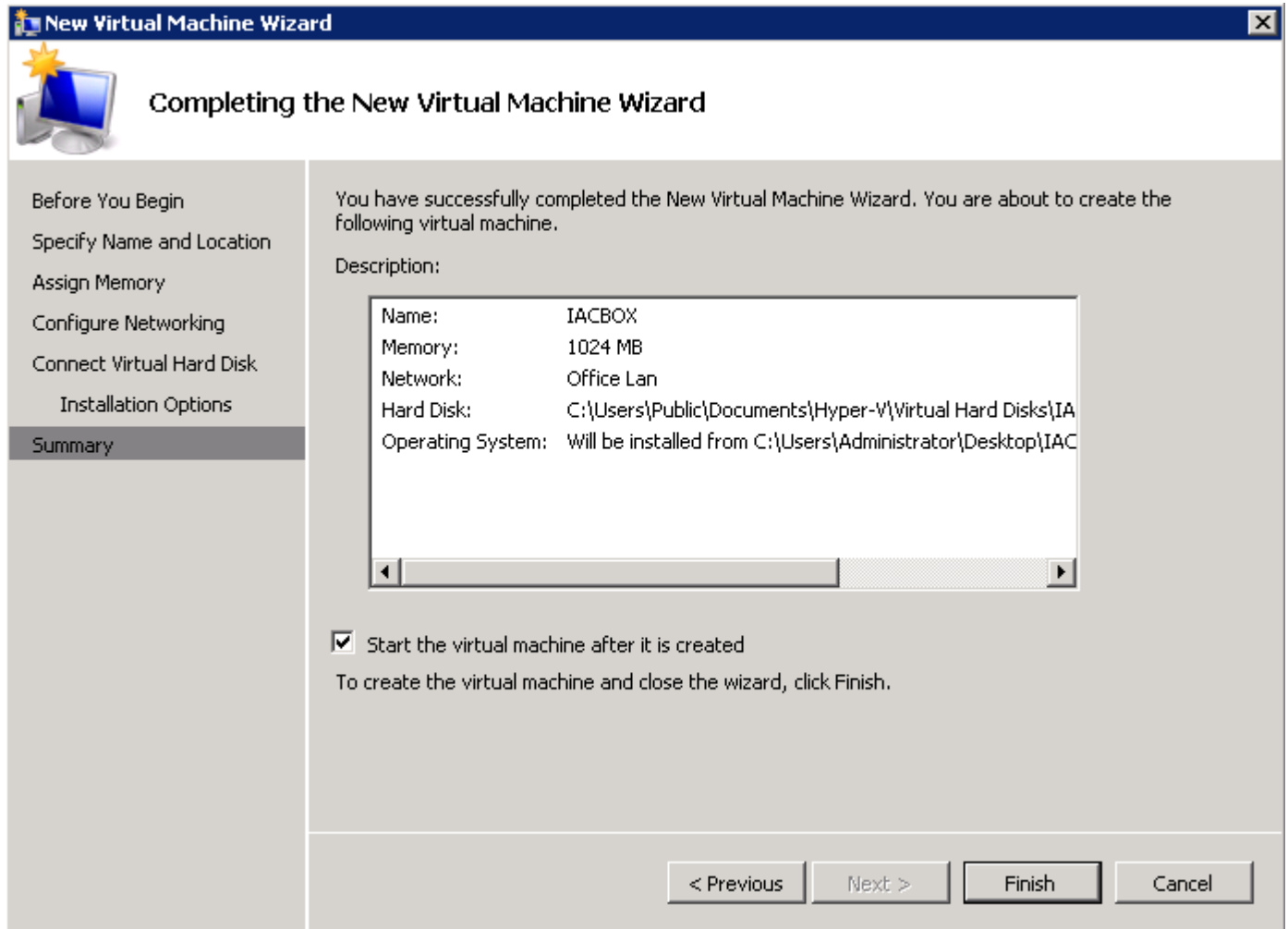
Here we select the installation media. Select “Install an operating system from a boot CD/DVD-ROM” if you want to install from a CD or an ISO Image.

If you want to install from a CD, select the correct Physical CD/DVD drive.

If you want to install from an ISO Image, enter the directory path to the ISO Image File.

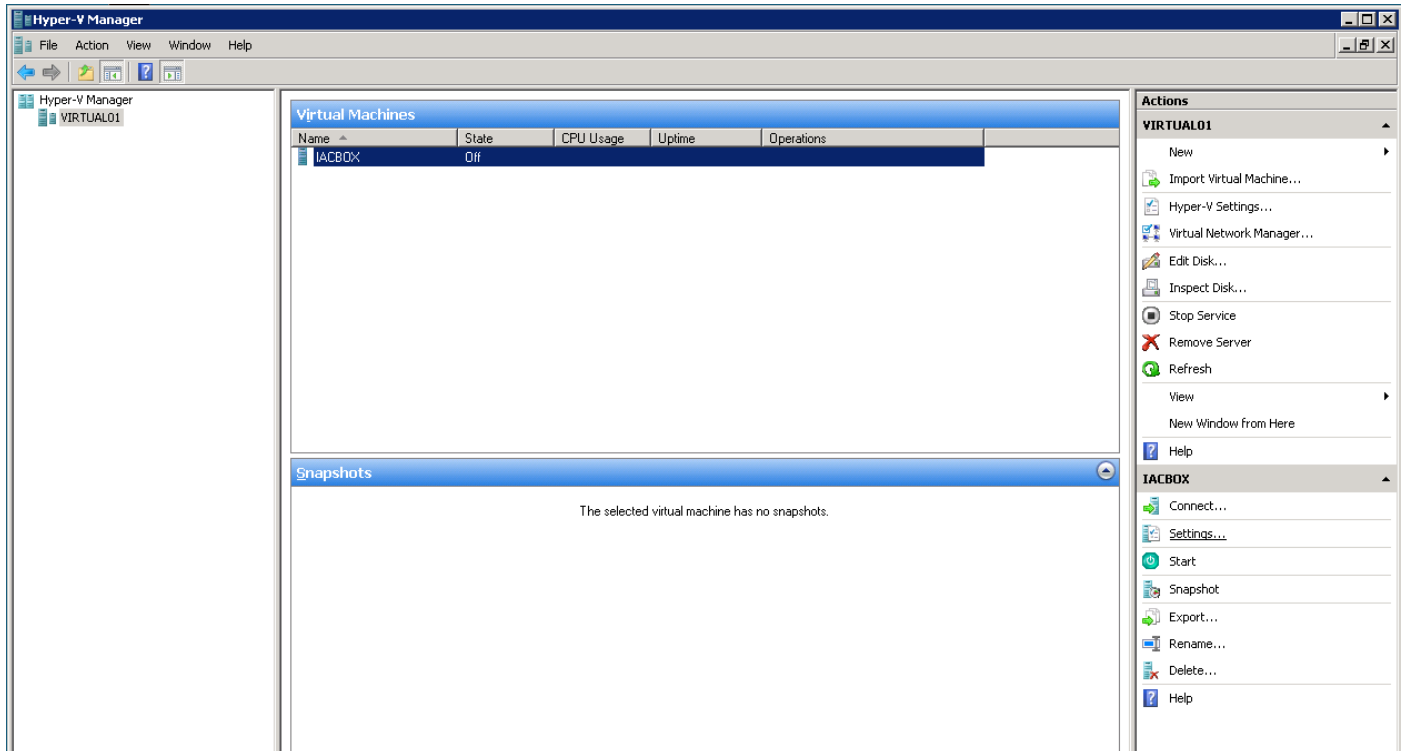
Click on „Next“ to continue.

### 3.2.6 Complete Installation

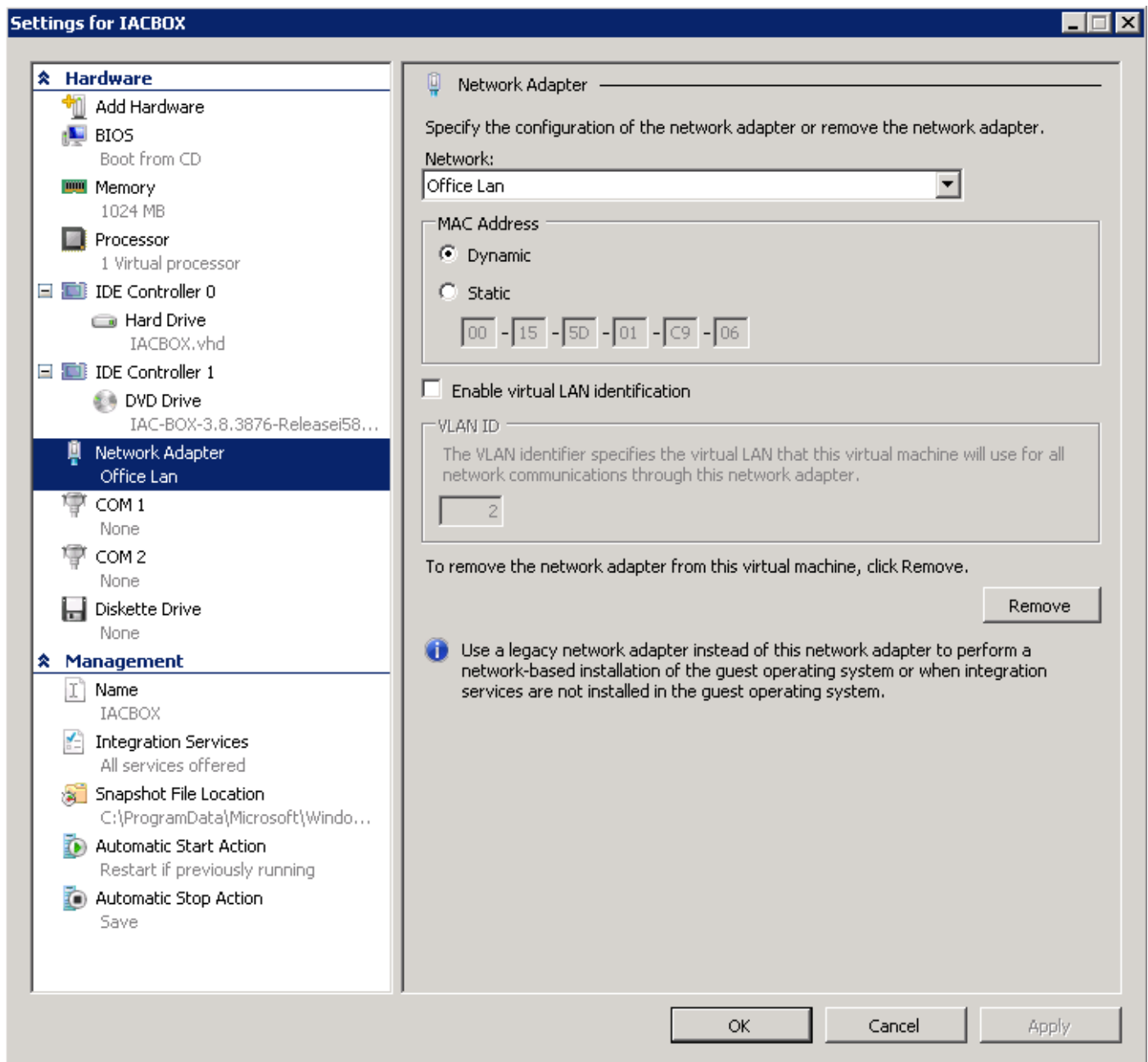


Here you see an overview of the settings of the virtual machine. Check if the settings are correct and click on „Finish“ to create the virtual machine now.

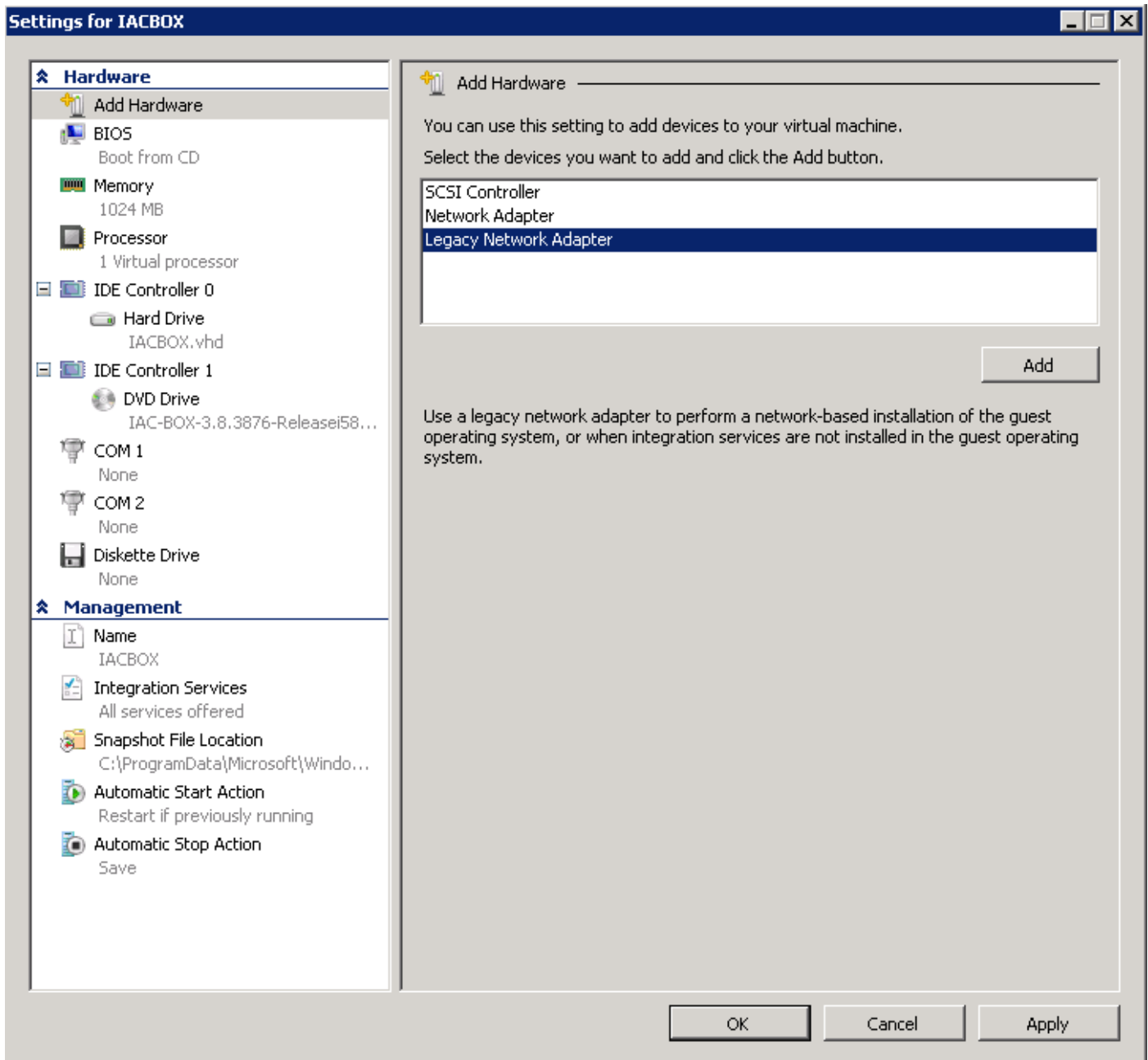
### 3.3 Configure network devices



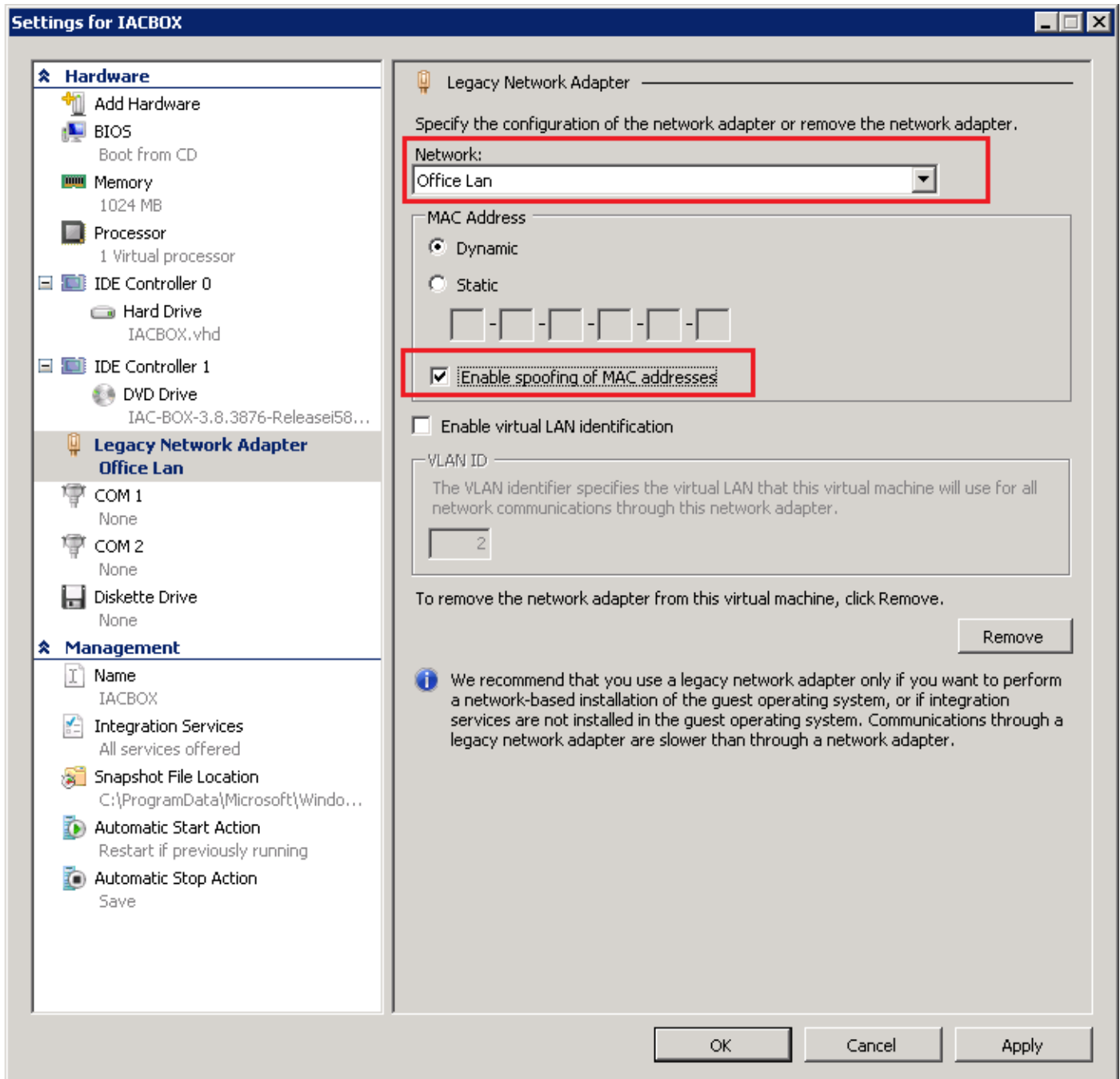
As you can see, the new virtual machine is now visible here. Click on „Settings“ on the right side. A new window opens.



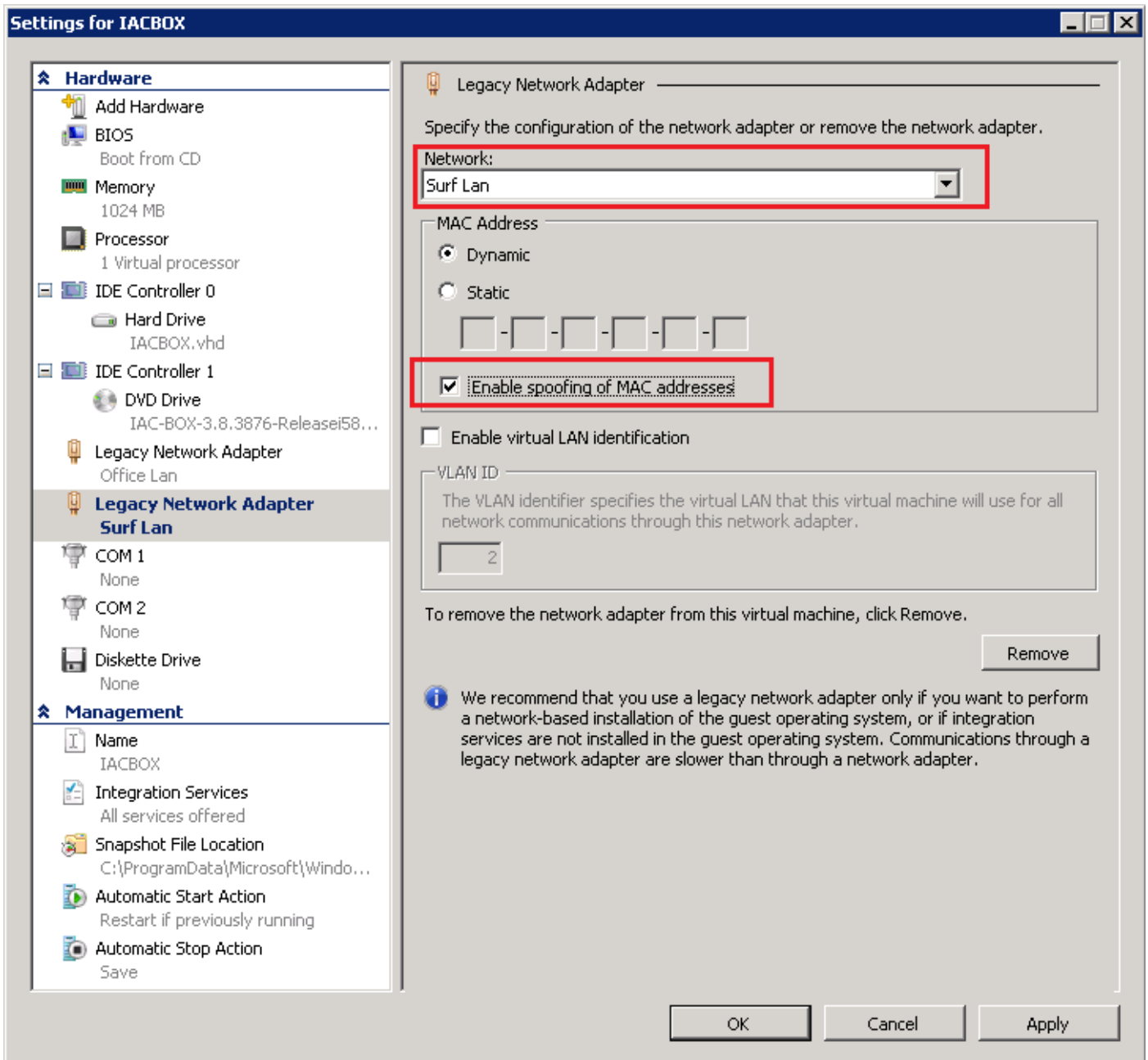
Click on the Network Adapter „Office Lan“ on the left side and delete it by clicking on „Remove“.



Now click on „**Add Hardware**“ and select „**Legacy Network Adapter**“. Click on „**Add**“ to add this new network adapter.

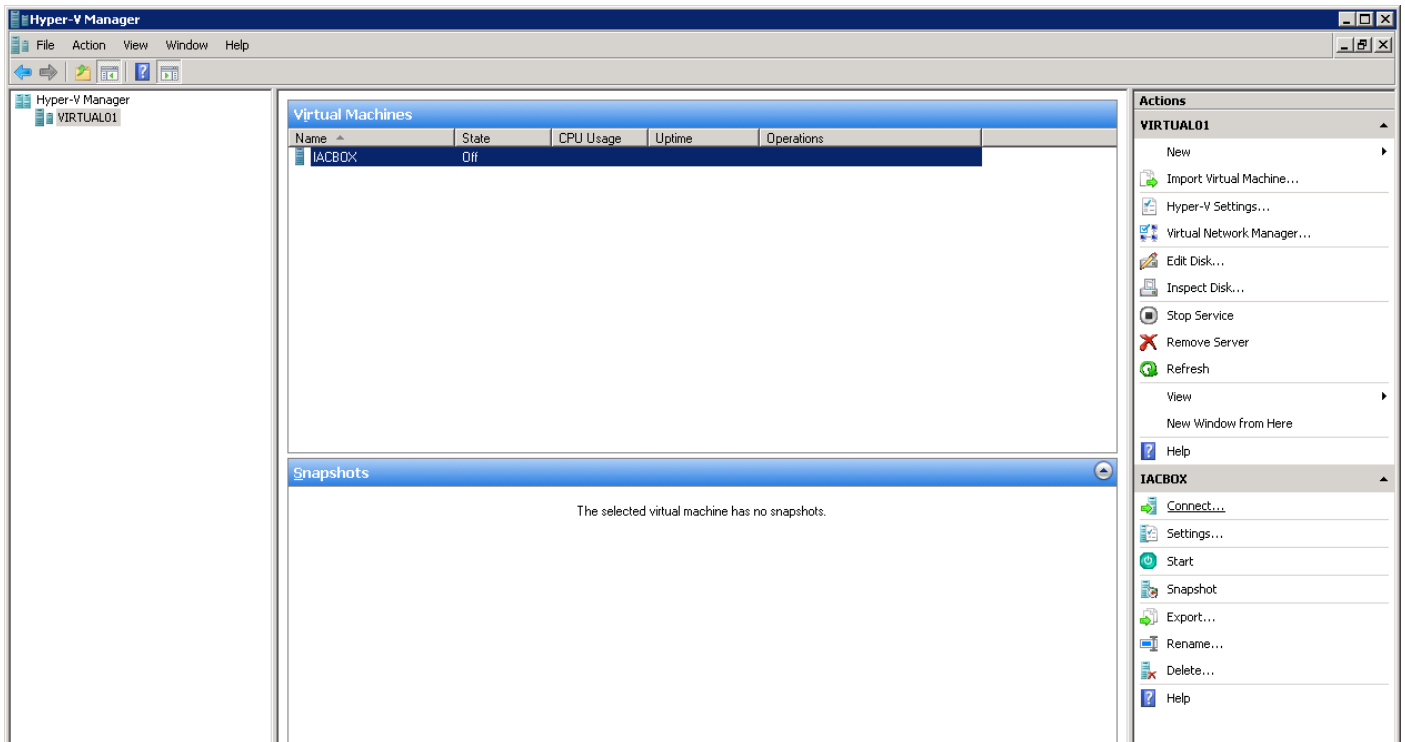


The network adapter you just added is now visible on the left side. Click on it to configure the settings. Select „**Office Lan**“ for network and **activate „Enable virtual LAN identification“**. Then click on „Apply“ to save the settings.

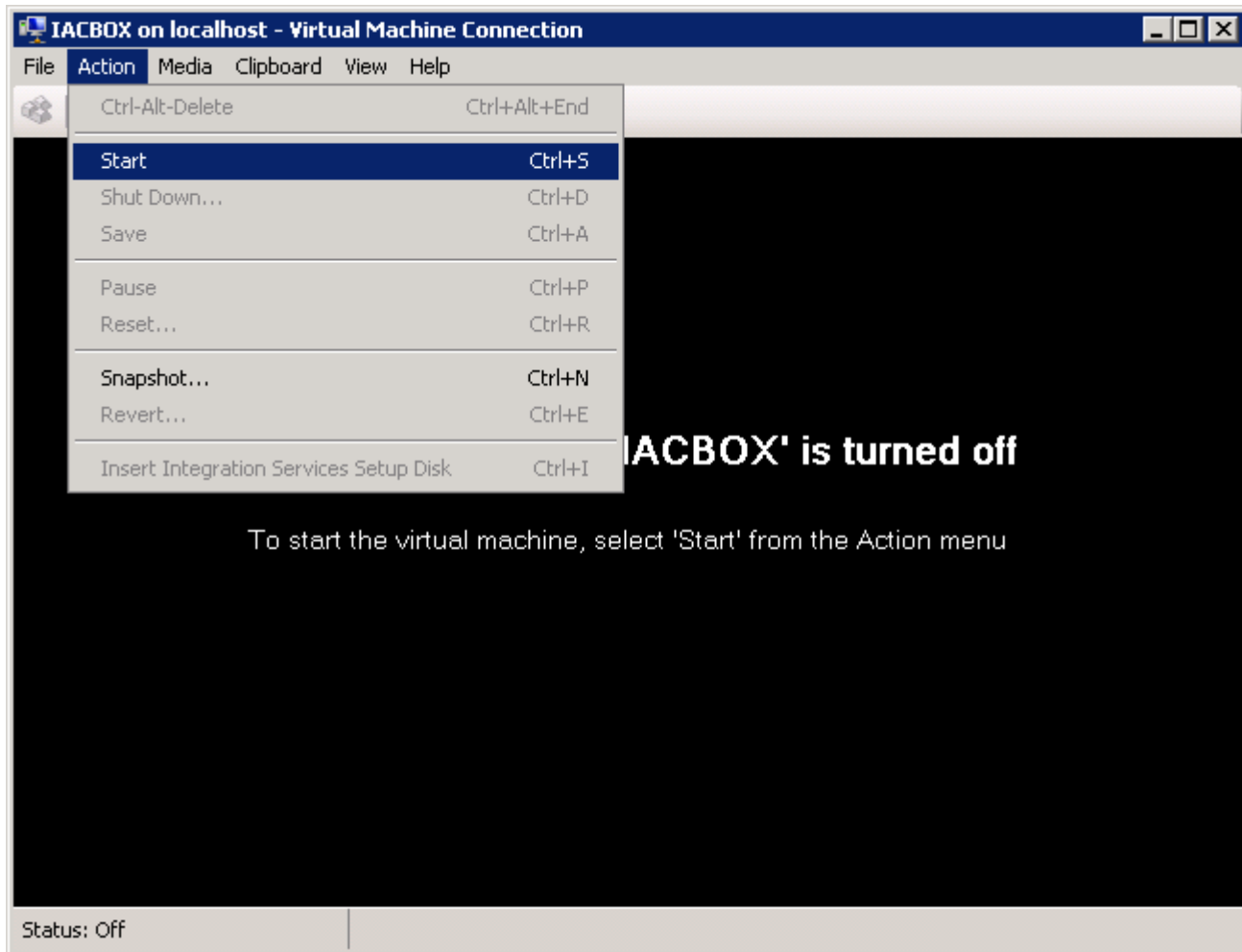


Now add a second „Legacy Network Adapter“. Click on it to configure the settings. For this network adapter, select „Surf Lan“ as network and also activate „Enable virtual LAN identification“. Click on „OK“ to save the settings.

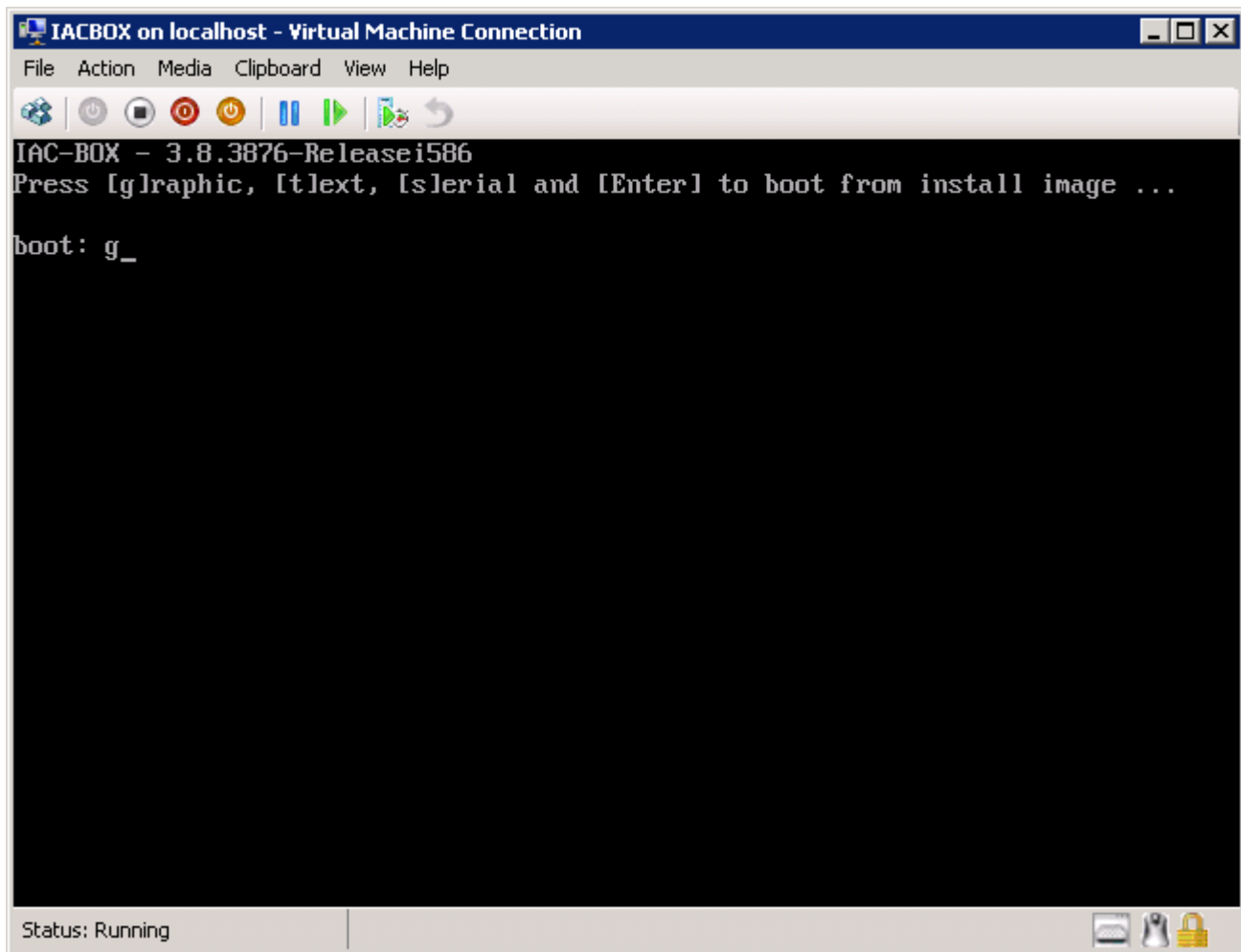
## 4. Start virtual machine



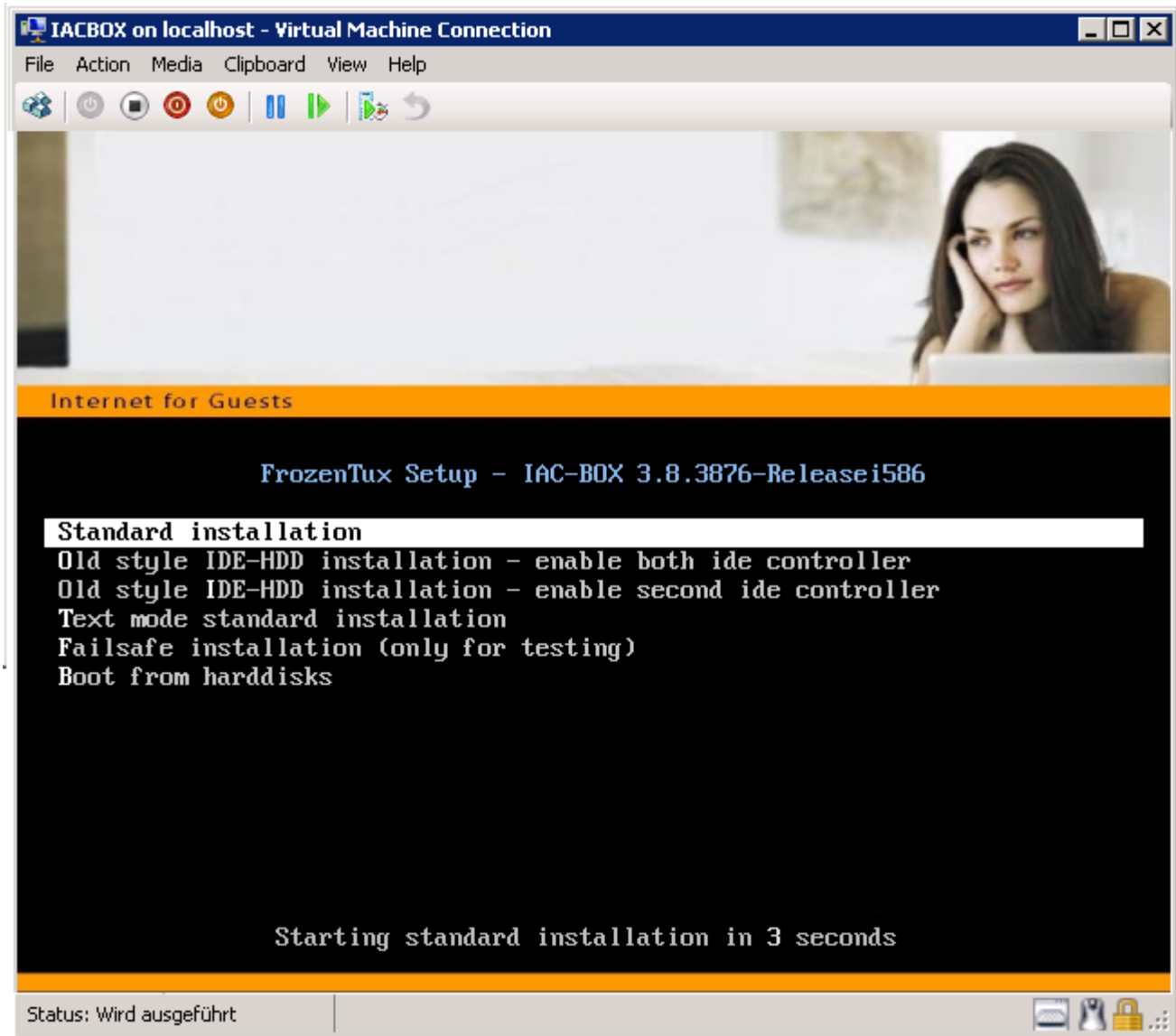
Now the virtual machine is configured correctly and ready to start. Therefore click on „Connect“ on the right side. A new window opens.



Click on „Action“ and then on „Start“ to start the virtual machine.



If the virtual machine boots correctly, you already see the default installation of IAC-BOX. Enter “g” and continue with Enter.



Now you can go on with the default installation of IAC-BOX.