

---

# Internet for Guests

## Serial Installation

1.0.0

English

21.07.2011



## Index

---

1. Serial Installation.....	3
1.1 COM interface configuration .....	3
1.2 Installation.....	3
1.2.1 Tools.....	3
1.2.2 Start the installation .....	4
1.2.3 Continue installation.....	4

# 1. Serial Installation

## 1.1 COM interface configuration

Choose the following settings when connecting by serial interface:

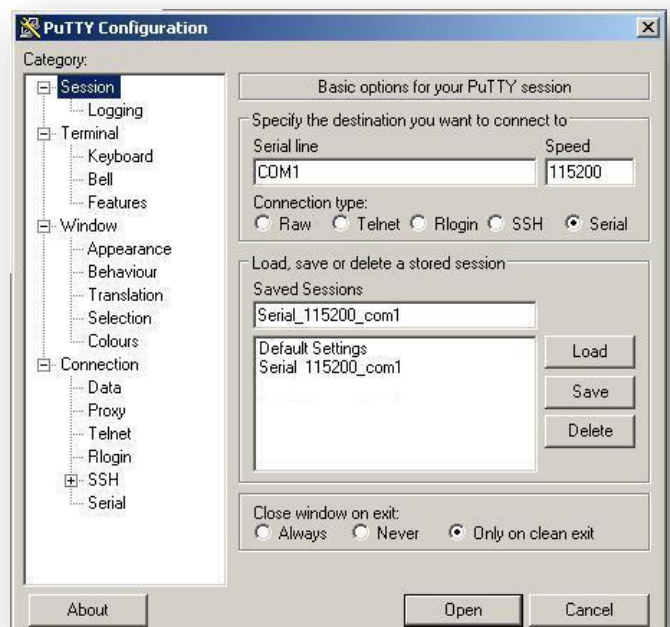
- **Data-Rate (Symbol-Rate):** 115200 Bauds
- **Data Bits:** 8 Bits
- **Stop Bit:** 1 Bit
- **Parity:** None
- **Flow Control:** RTS/CTS

## 1.2 Installation

### 1.2.1 Tools

We recommend the tool **putty** for a serial connection when using Windows operating system. You can find this tool on the IACBOX installation CD or on the internet. Copy the putty into your computer before you start the installation.

After launching the application configure the settings according to the following screenshots:



### 1.2.2 Start the installation

To start the serial installation, use the following steps:

- Insert the desired Boot media (e.g. CD, USB stick)
- Start the serial connection using the **Putty** configuration as described under 1.2.1
- Ensure that the system BIOS is configured to boot from your installation source
- After the BIOS screen disappeared in your Putty terminal you get prompted to enter the installation mode → enter 's' for serial installation.

### 1.2.3 Continue installation

Follow the steps as described in the Technical Manual to complete the installation.